

# HERD Door Defender Installation Procedure

- This document shows how to install your new Door Defender onto your trailer.
- Ensure that you have completely read and understand document **S017 - Safety** before beginning this installation procedure.
- The Door Defender is meant to be applied only under typical loading scenarios. Before opening the trailer doors, the driver must ensure they are not standing in the path of the door or any load that could fall out of the trailer.
- Before installing the Door Defender ensure your trailer meets the recommended dimensions found in Part III: Recommended Trailer Dimensions. If your trailer is outside of the recommended dimensions the Door Defender may not work as intended.

## I. Installing the HERD Door Defender

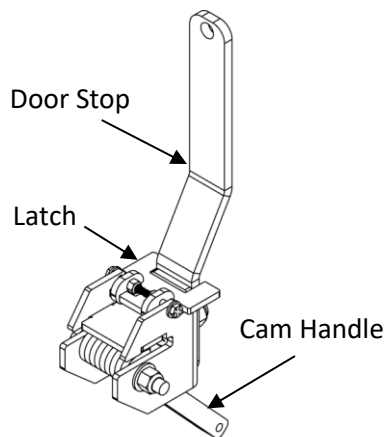


Figure 1b: Door Defender Components



Rear Sill Cross Bumper

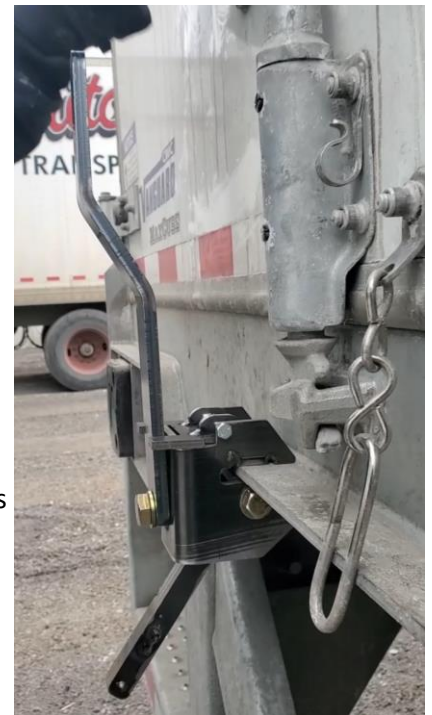


Figure 1c: Door Defender on Trailer

Figure 1a: Door Defender Placement Location

Figure 1: Installing the Door Defender

1. Locate a section on the rear sill cross bumper of your trailer that is suitable for installation of the Door Defender; see Figure 1a. Ensure that the rear lights are not obstructed by the installation.
2. Place the Door Defender on the rear sill cross bumper such that the Door Stop is facing upward as shown in Figures 1b and 1c. Ensure that the placement will allow enough clearance to open the trailer door, and check the load safely; if you believe there is too much or too little clearance, adjust the Door Defender on the rear sill cross bumper until sufficient clearance is achieved.

3. With the Door Defender in place, pull the Cam Handle away from your trailer until sufficiently clamped to the rear sill cross bumper; see Figure 1c for fully clamped Door Defender. Pull the Door Stop towards you, attempting to move the Door Defender. If there is any motion readjust and reclamp the Door Defender until no motion is present.

## II. Operating the HERD Door Defender



Figure 2a: Checking Load Position



Figure 2b: Opening Defender Latch

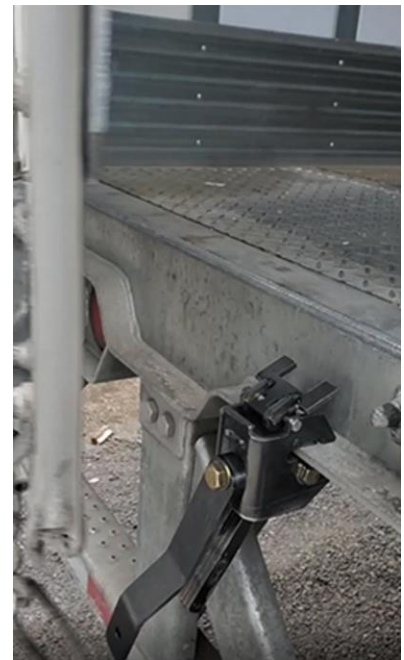


Figure 2c: Moving the Door Stop

Figure 2: Operating the Door Defender

1. With the Door Defender in place, move to a location that ensures you are standing outside of the path of the trailer door or any load that could fall out of the trailer. Open the rear trailer door on the side the Door Defender is installed to check load position; see Figure 2a. If the load is in a position that would allow the door to be safely opened, continue on to the next step. If the load is unsafe, attempt to adjust the load to a safe position before continuing to the next step.
2. Close the door and proceed to lift the Door Defender Latch upwards; see Figure 2b. With the Latch open, move the Door Stop to the left or right, and proceed with unloading the trailer; see Figure 2c.
3. Once unloading is complete, return Door Stop to locked upright position, then push the Cam Handle toward the front of the trailer until unclamped. Remove the Door Defender from the rear sill cross bumper and store in a secure location.

**Important: Check the Door Defender before and after each unloading to ensure no components are damaged or loose. Retorque any loose hardware.**

**III. Recommended Trailer Dimensions**



- A:** The value for A is the distance measured from the end of the rear sill cross bumper to the trailer doors.
- B:** The value for B is the distance measured from the bottom to the top of the rear sill cross bumper.
- C:** The value for C is the distance from the bottom of the rear sill cross bumper to the bottom of the trailer doors.

Table 1: Recommended Trailer Dimensions

Dimension	Minimum	Maximum
A	35 mm (1.4")	75 mm (3")
B	8 mm (0.315")	10 mm (0.4")
C	60 mm (2.4")	240 mm (9.4")