

This Guide is for all Truck Guard Models, including (where applicable):
Aero
Defender
Texas
Big Texas
Road Train
Super Road Train

Truck I.D.	Truck Models
FL33	Freightliner Cascadia Classic / Cascadia Evolution - SBA



Thank you for choosing HERD!

For assistance call
1-888-543-4373
www.HERD.com

Important

- Herd Truck Guards are vehicle "Make & Model" specific. Use of a Truck Guard on a vehicle other than the model it was designed for will constitute improper use of the product and may void warranty.
- Unless otherwise specified, Grade 8 or Class 10.9 hardware is to be used. For the purposes of these instructions, OEM hardware means the truck's original factory hardware.
- For further detail of warranty coverage and warranty repair information visit www.HERD.com.

General Safety

- Take time to fully read the instructions before installing the Herd Truck Guard.
- At all times exercise safe work shop practices, wear steel toe boots and safety glasses during installation.
- Parts and components of the Herd Truck Guard can be heavy, handle with care to avoid injuries.
- Respect power tools and use them as advertised.

Reference this Parts List if your Truck Guard has a CEB (Captive Eye Bolt) Latching System

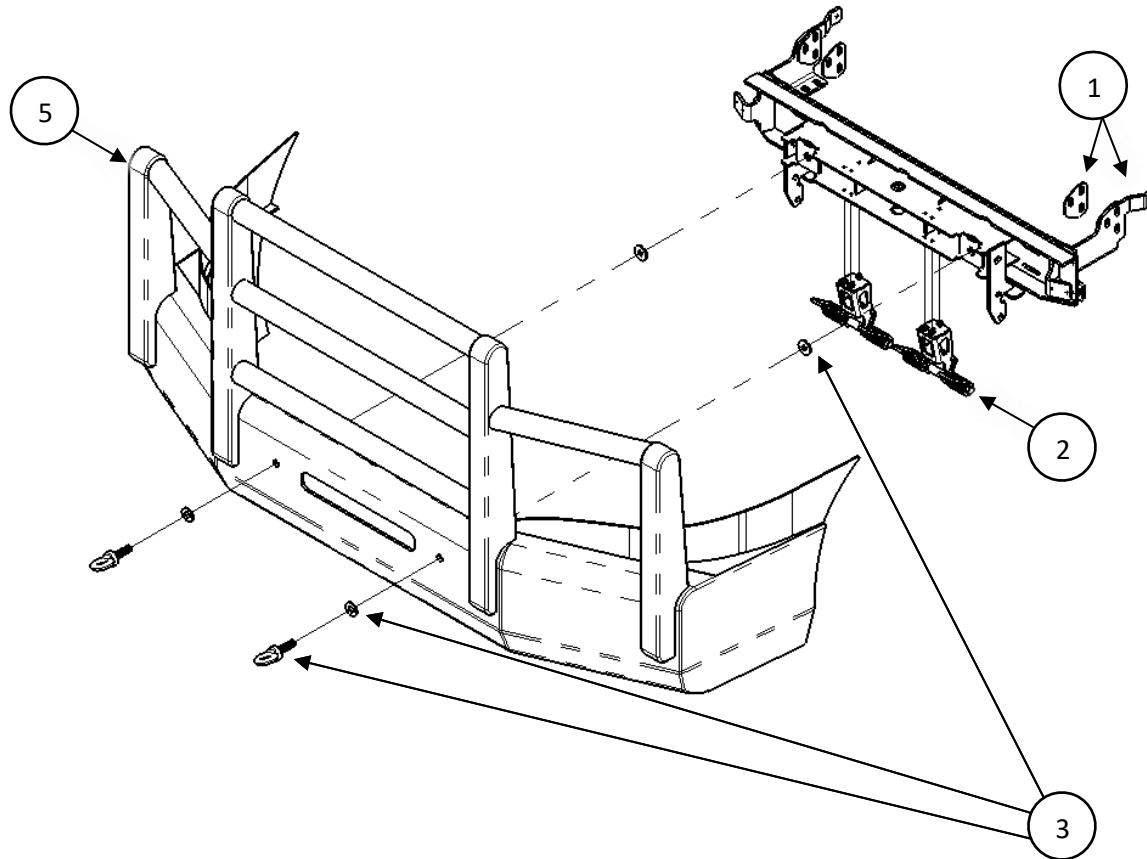


Figure 1 – Captive Eye Bolt Latching System

Table 1: Parts and Hardware Included

Item No	Part No	Description	Qty
1	BR-FL33-AT (Only with Aero, Road Train, Super Road Train, Texas, & Big Texas Versions) or BR- FL33-FLT (Only with Defender Version)	BRACKET, Freightliner Cascadia Classic / Cascadia Evolution - SBA	1
2	1MPA027 (Only with Aero, Road Train, Super Road Train, Texas, & Big Texas Versions) or 1MPA024 (Only with Defender Version)	ASSY - LEGACY LIFT ASSIST	2
3	7-EYEBOLT KIT	CAPTIVE EYEBOLT ASSEMBLY	2
5	HERD TRUCK GUARD	TRUCK GUARD APPEARANCE MAY VARY BY SKU	1
*6	500121	BOLT-HEX 5/8-11X3 NC GR8 YZP	4
*7	500084	BOLT-HEX 1/2-13X1-1/2 NC GR8 YZP	6
*8	500086	BOLT-HEX 1/2-13X2 NC GR8 YZP	8
*9	500167	NUT-NYLOCK 1/2-13 NC GR8 YZP	8
*10	500214	WASHER-FLAT 5/8 SAE GR8 YZP	4
*11	500206	WASHER-FLAT 1/2 SAE GR8 YZP	22
*12	W-8SH	Shim, 1/16"	2

Items marked with * are not shown in Figure 1 above

Reference this Parts List if your Truck Guard has a Slam Latch Latching System

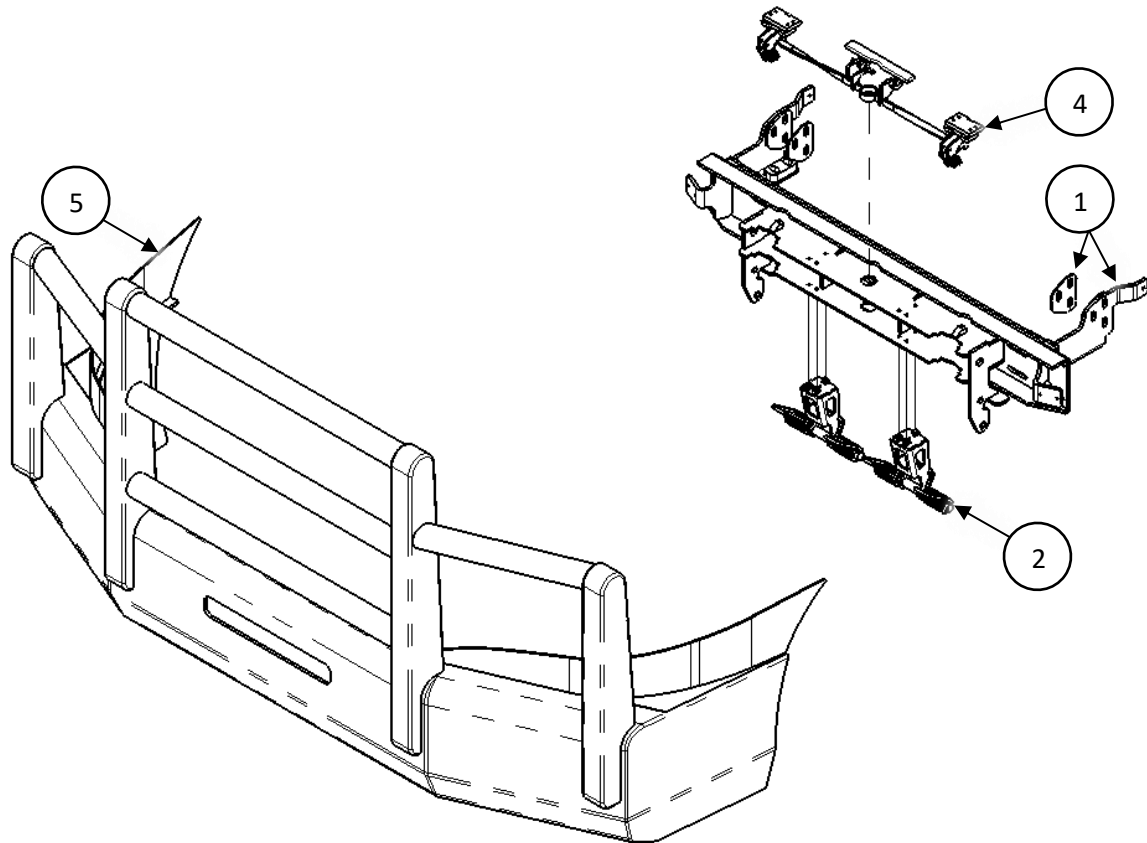


Figure 2 – Slam Latch Latching System

Table 2: Parts and Hardware Included

Item No	Part No	Description	Qty
1	BR-FL33-AT (Only with Aero, Road Train, Super Road Train, Texas, & Big Texas Versions) or BR- FL33-FLT (Only with Defender Version)	BRACKET, Freightliner Cascadia Classic / Cascadia Evolution - SBA	1
2	1MPA027 (Only with Aero, Road Train, Super Road Train, Texas, & Big Texas Versions) or 1MPA024 (Only with Defender Version)	ASSY - LEGACY LIFT ASSIST	2
4	4-MC-SLA-A	ASSY- LEGACY SLAM LATCH	1
5	HERD TRUCK GUARD	TRUCK GUARD APPEARANCE MAY VARY BY SKU	1
*6	500121	BOLT-HEX 5/8-11X3 NC GR8 YZP	4
*7	500084	BOLT-HEX 1/2-13X1-1/2 NC GR8 YZP	6
*8	500086	BOLT-HEX 1/2-13X2 NC GR8 YZP	8
*9	500167	NUT-NYLOCK 1/2-13 NC GR8 YZP	8
*10	500214	WASHER-FLAT 5/8 SAE GR8 YZP	4
*11	500206	WASHER-FLAT 1/2 SAE GR8 YZP	22
*12	W-8SH	Shim, 1/16"	2

Items marked with * are not shown in Figure 2 above

Installation Procedure

1. With the hood of the truck open, disconnect wiring to factory driving lights (if equipped) on both driver side and passenger side.



Figure 3 – Factory Driving Lights Disconnected (Passenger Side Shown)

2. Remove hood struts from OEM bumper mounting brackets on both driver and passenger side. Remove bolts that connect OEM bumper to truck frame. Retain strut mount hardware for further use. Remove OEM bumper.

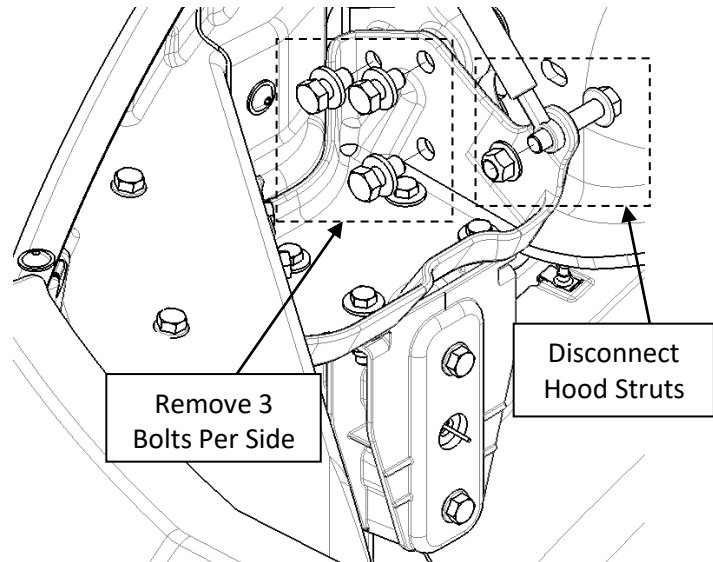


Figure 4 – Factory Bumper Removal (Driver Side Shown)

3. If the truck is equipped with a collision avoidance system (CAS), it must be removed. Disconnect the wiring harness before removing the screws as shown. Retain OEM hardware. Remove the factory CAS bracket from the truck's frame.

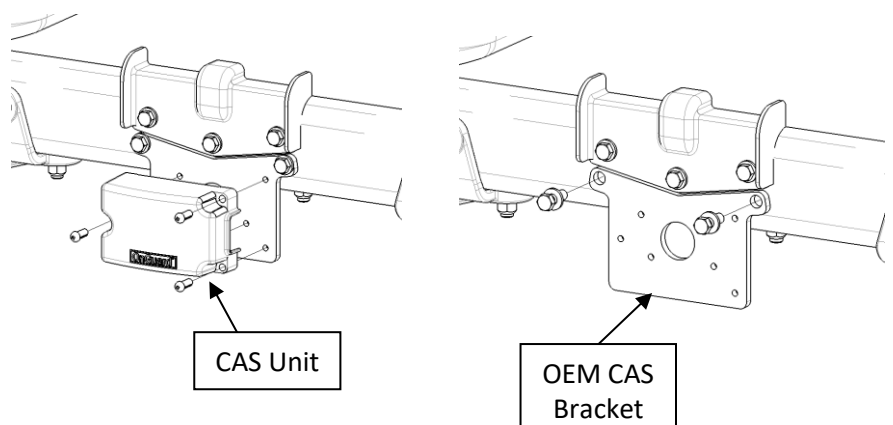


Figure 5 – CAS Unit and Bracket Uninstall

Installation Procedure

- From the underside of the truck frame, remove the front two bolts on both driver and passenger sides as shown (four bolts total).

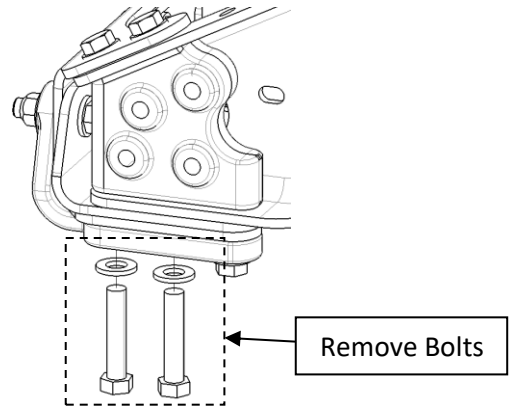


Figure 6 – Truck Frame Bolt Removal (Driver Side Shown)

Important

Freightliner Cascadia is available in either a **Wide Rad** or **Narrow Rad** configuration. In order to determine the correct truck configuration, see steps 5 and 6 to identify typical features of each truck frame.

- Attach driver side submount and passenger side submount (Part of Item 1) to truck's frame using provided hardware (Items 6, 7, 10, 11).

For **Wide Rad** truck models, position the spacer plate (Part of Item 1) between submount and truck frame as shown.

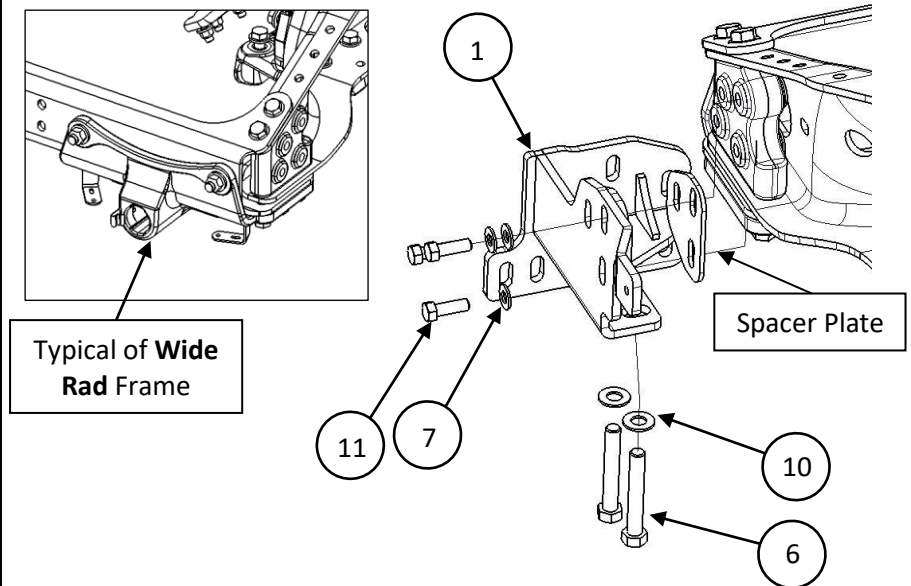


Figure 7 – Wide Rad Submount Installation (Driver Side Shown)

Installation Procedure

6. For **Narrow Rad** truck models, position the spacer plate (Part of Item 1) between bolts and submount as shown.

Position Packer (Part of Item 1) between submount and truck frame as shown.

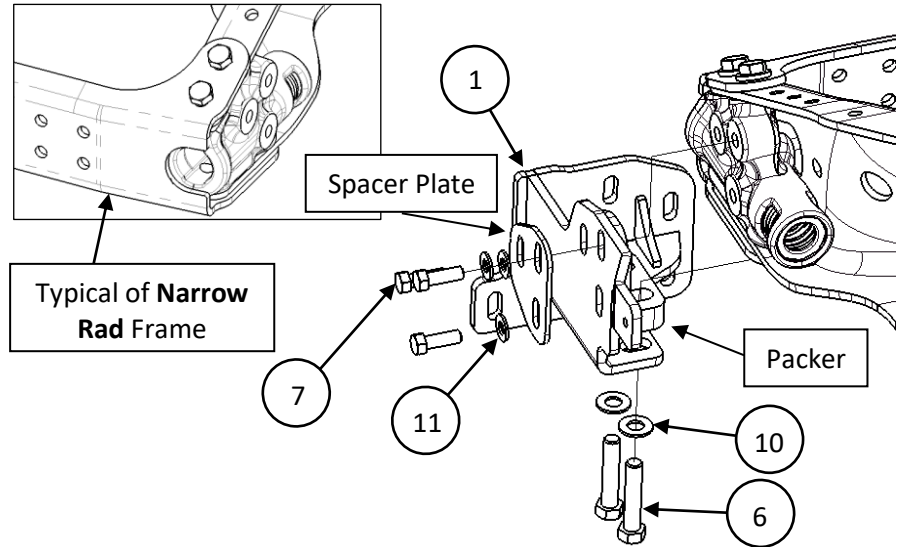


Figure 8 – Narrow Rad Submount Installation (Driver Side Shown)

7. Reattach hood struts to Herd submounts on both driver side and passenger side, reusing OEM hardware.

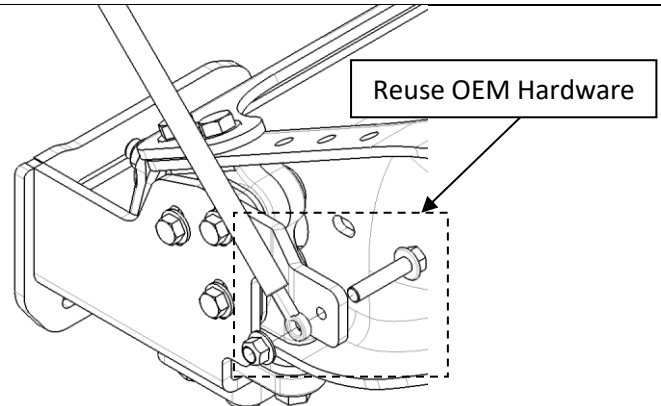


Figure 9 – Hood Strut Installation (Driver Side Shown)

8. Attach Herd Bracket to Herd submounts (Item 1). Use Provided Hardware (Items 8, 9, 11).

Note:

If installer has a crane available, truck guard can be attached onto truck with bracket, otherwise disassemble truck guard from bracket first. Keep hardware. If bumper is equipped with lift assist, the springs must be removed. Refer to instructions S004 (Defender bumpers) or S005 (Aero/Texas bumpers) for proper lift assist disassembly procedure.

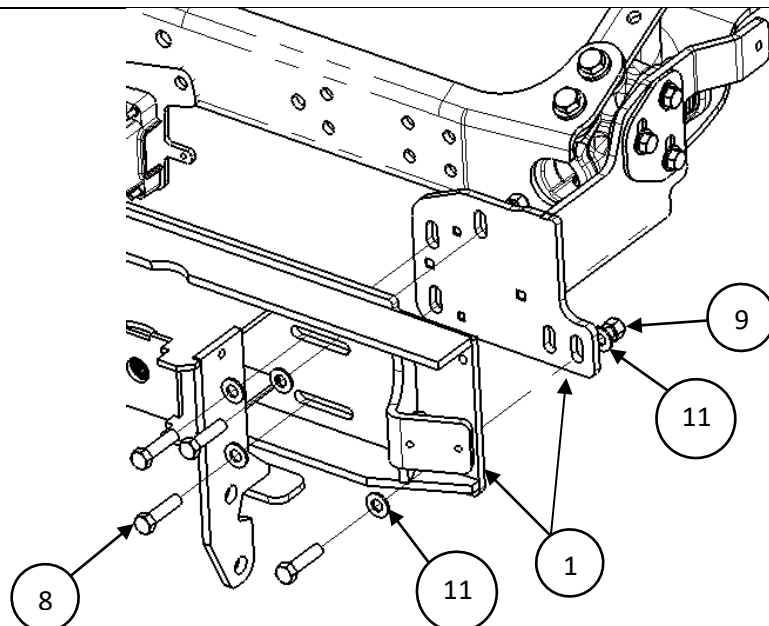


Figure 10 – Herd Bracket Installation

Installation Procedure

9. If the Herd Truck Guard was disassembled from bracket in step 8, reinstall Herd Truck Guard onto bracket using the hardware kept from step 8.

For DFLT & Defender models only: To install the hinge bolts, the bumper must be in the open (down) position to allow the bottom lip to go under and around the steel hinge.



Figure 11 – View of Bracket Hinge

10. If equipped with OEM driving lights, remove driving lights from factory bumper and retain OEM hardware. Reinstall onto Herd bumper using the preinstalled driving light brackets on both driver and passenger side.

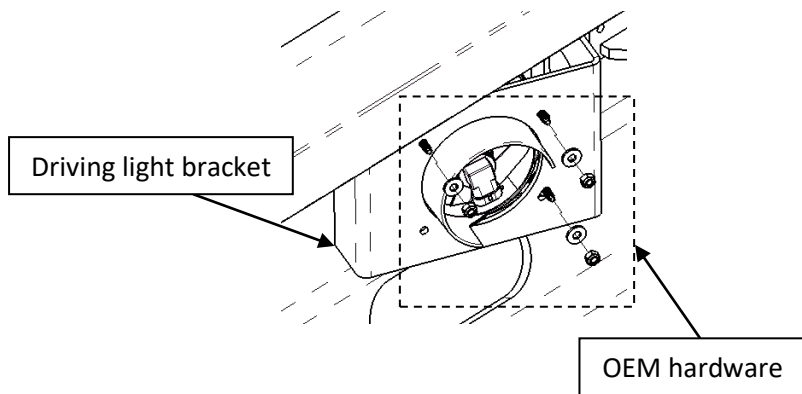


Figure 10 – OEM light installation.

11. Close the truck guard and check fitment. Truck guard position can be adjusted side to side and up or down as required. Once fitment is confirmed, tighten all mounting bolts. Torque 1/2" and 5/8" hardware to 110 lb-ft.



Figure 12 – Herd Truck Guard Installed

Important

- Check mounting points after the first 5000 km and every 3-6 months.
- If this truck guard is equipped with Legacy Herd Slam Latch, periodic adjustment is required. Refer to Legacy Slam Latch Installation adjustment instructions to properly adjust your Slam Latch.
- The drop-forged eyebolts are an integral part of the strength of Herd Truck Guards. When tightened firmly, they will minimize vibration and provide superior impact resistance.
- To help maintain the factory finish, avoid acid wash.