

SKU #	Truck Model
FL33BG / FL44BG	Freightliner Cascadia
	

Thank you for choosing HERD!

For assistance call  
1-888-543-4373  
[www.HERD.com](http://www.HERD.com)

### Important

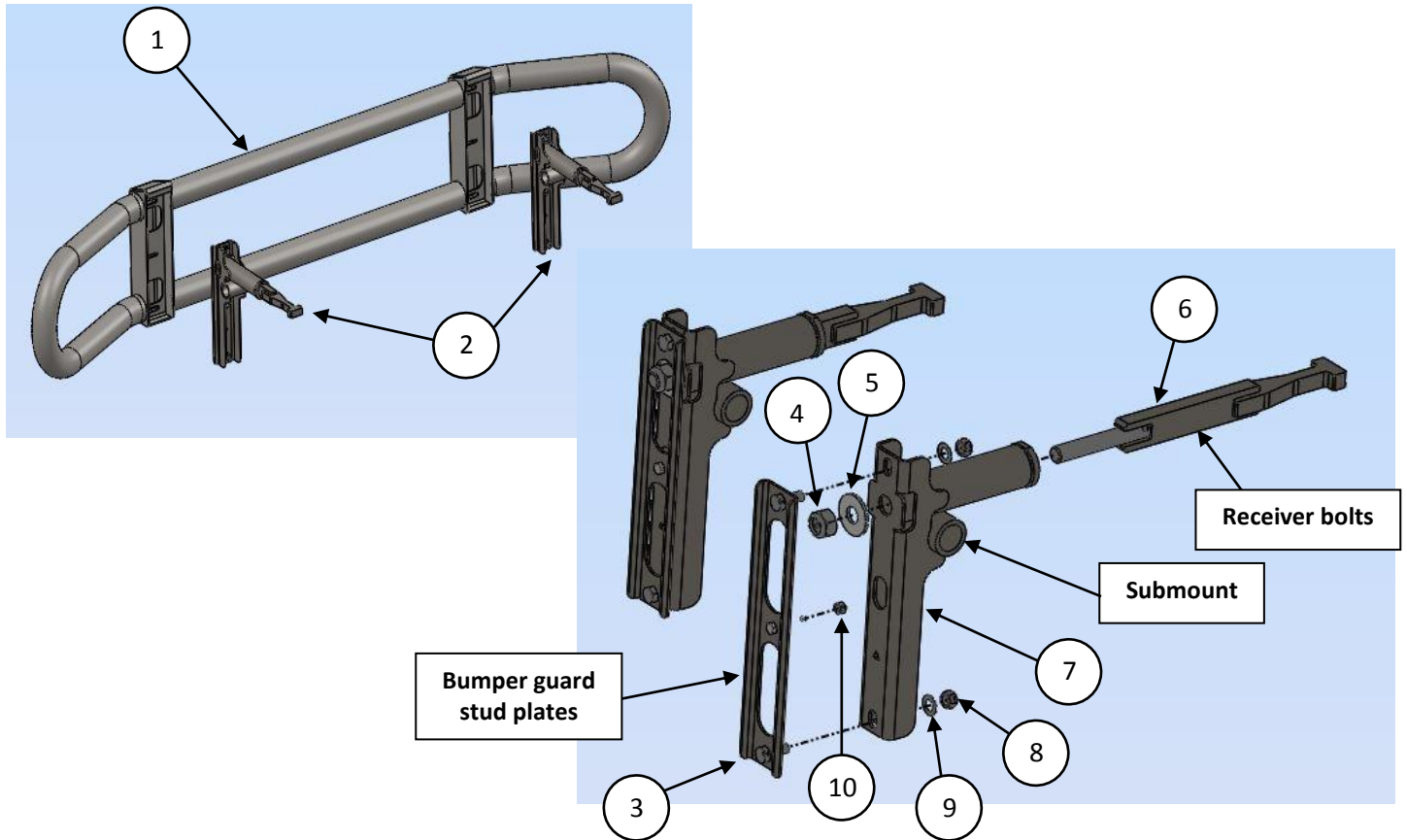
- Herd Bumpers are vehicle "Make & Model" specific. Use of a bumper on a vehicle other than the model it was designed for will constitute improper use of the product and may void warranty.
- Unless otherwise specified, Grade 8 or Class 10.9 hardware is to be used. For the purposes of these instructions, OE hardware means the truck's original factory hardware.
- For further detail of warranty coverage and warranty repair information visit [www.HERD.com](http://www.HERD.com).

### General Safety

- Take time to fully read the instructions before installing the Herd bumper.
- At all times exercise safe work shop practices, wear steel toe boots and safety glasses during installation.
- Parts and components of the Herd bumper can be heavy, handle with care to avoid injuries.
- Respect power tools and use them as advertized.

HERD North America Inc.  
2168 Springfield Road  
Box 28, Group 525, RR5  
Winnipeg, MB. Canada R2C 2Z2

## Parts and tools referenced in this instruction



### Parts and hardware included

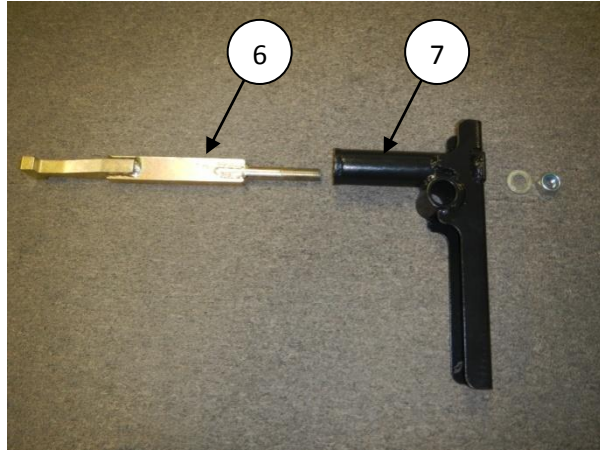
Item No	Part No	Description	Qty
1	BG-GR-01	ASSY-WLD CASCADIA	1
2	BG-MTK-01	ASSY-FL33BG MOUNTING KIT	1
3	1MPA001	ASSY-WLD STUD BRACKET	2
4	NLN0.75-10GR8	NYLON LOCK NUT ¾-10GR8 YZP	2
5	FW0.75GR8	FLAT WASHER ¾ GR8 YZP	2
6	1TBA001	ASSY-WLD CASCADIA TOW	6
7	1TBA002	ASSY-WLD SUBMOUNT	2
8	HN0.5-13GR5OS	HEX NUT ½-13 TAPPED OVERSIZE	4
9	BW0.5SS18-8	BELLEVILLE WASHER ½ SS18-8	4
10	NLN0.3125-18GR8	NYLON LOCK NUT 5/16-18 GR8 YZP	2

### Tools Required

Tool	Specification
Socket	¾" or 19 mm
Socket	½" or 13 mm
Wrench	¾" or 19 mm
Wrench	½" or 13 mm

## Installation Procedure

1. Assemble submounts by inserting receiver bolt (Item 6) into submount (Item 7) and securing the assembly using the supplied  $\frac{3}{4}$ " flat washers and nylon lock nuts (do not tighten hardware at this stage).



**Figure 1** – Assemble receiver bolt into submounts.

2. Insert bumper guard stud plates (Item 3) into bumper center uprights from bottom of bumper. Using the supplied  $\frac{5}{16}$ " flat washers and nylon lock nuts (Item 10) to secure plates in place (tighten locknut just enough to engage the nylon, allowing the plate to move freely during installation).



**Figure 2** – Guard mounting plate installation.

## Installation Procedure

3. Insert submount assembly into factory tow receiver holes as shown.



**Figure 3** – Submount assembly installation.

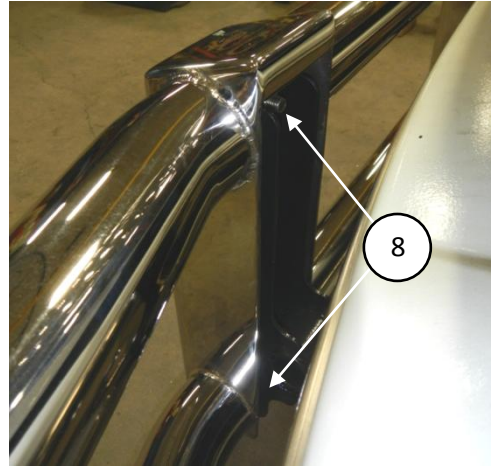
4. Push on receiver bolt (Item 6) to compress factory tow receiver spring housed in casting. Once spring is depressed, rotate submount assembly 90 degrees to the vertical position as shown ensuring the receiver bolt engages factory casting. Tighten  $\frac{3}{4}$ " nylon lock nuts (Item 4), ensuring that the submount is level (vertically) and flush against factory tow receiver casting face, then torque hardware to 200 ft-lbs (271 N·m). Repeat on opposite side of bumper.



**Figure 4** – Submount assembly installation. Narrow Rad version shown.

## Installation Procedure

5. Install bumper guard onto submounts, guiding loose inner mounting plate aligning them with holes in submount. From backside of upright, install  $\frac{1}{2}$ " lock washers (Item 9) and  $\frac{1}{2}$ " hex nuts (Item 8) as shown. Center and level the bumper guard and torque hardware to 86 ft-lbs (115 N·m).



**Figure 5** – Bumper guard attached to submounts.

6. Open truck hood to ensure there is no interference with the hood and top of bumper guard.

**Note:**

If bumper guard adjustment is required, loosen hardware tighten in step 5, readjust then tighten all hardware.



**Figure 6** – Bumper guard installed (Narrow Rad version shown).

**Important**

- Check mounting points after the first 5000 km and every 3-6 month.