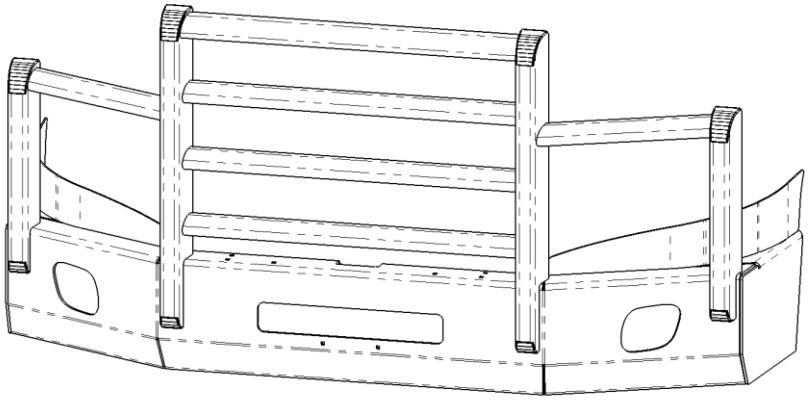


SKU #	Truck Model
FL33C4-02	Freightliner Cascadia
	

Thank you for choosing HERD!

For assistance call
1-888-543-4373
www.HERD.com

Important

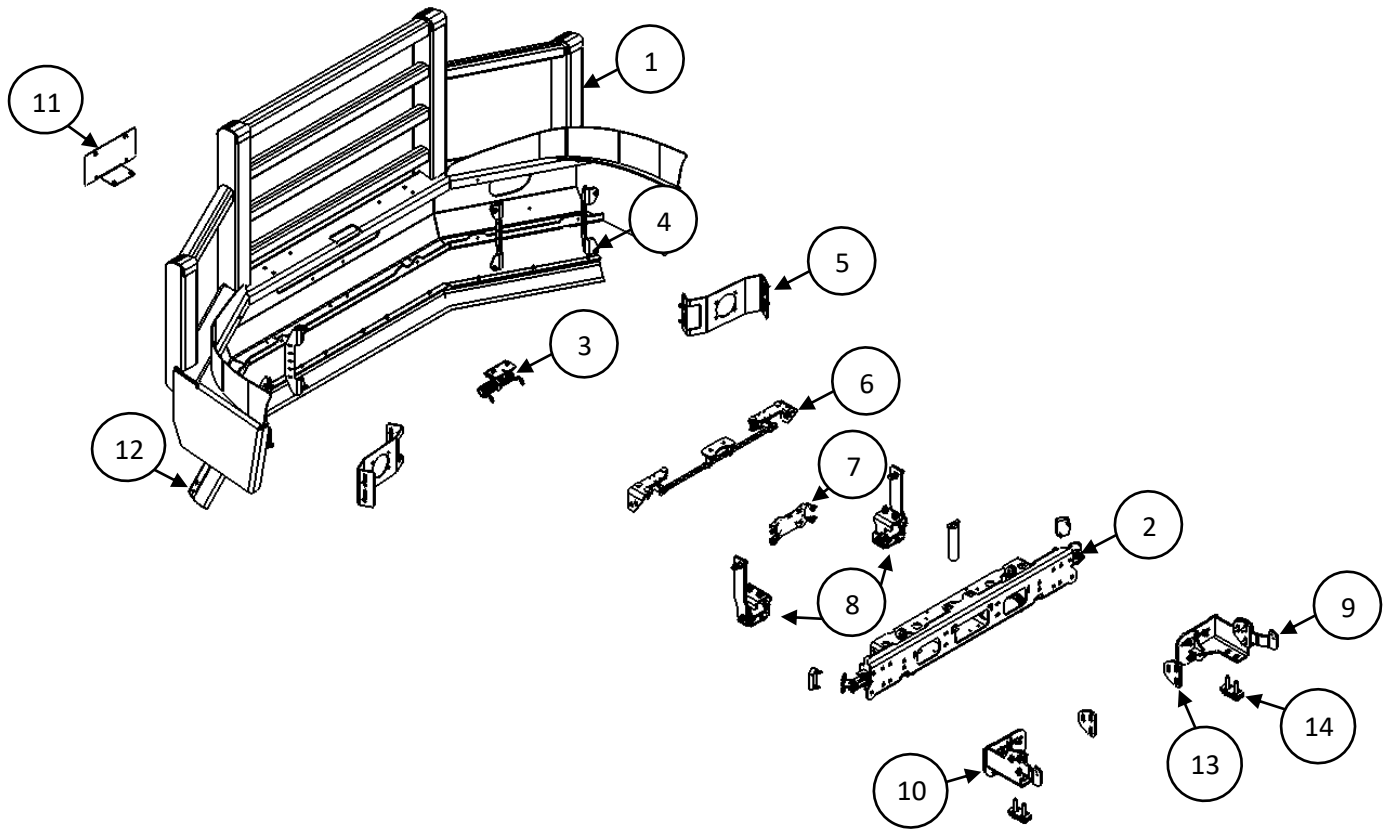
- HERD Guards are vehicle "Make & Model" specific. Use of a guard on a vehicle other than the model it was designed for will constitute improper use of the product and may void warranty.
- Unless otherwise specified, Grade 8 or Class 10.9 hardware is to be used. For the purposes of these instructions, OE hardware means the truck's original factory hardware.
- For further detail of warranty coverage and warranty repair information visit www.HERD.com.

General Safety

- Take time to fully read the instructions before installing the HERD Guard.
- At all times exercise safe work shop practices, wear steel toe boots and safety glasses during installation.
- Parts and components of the HERD Guard can be heavy, handle with care to avoid injuries.
- Respect power tools and use them as advertized.

HERD North America Inc.
2168 Springfield Road
Box 28, Group 525, RR5
Winnipeg, MB. Canada R2C 2Z2

Parts and tools referenced in this instruction



Parts and hardware included

Item No	Part No	Description	Qty
1	2F0038	Herd Guard	1
2	100062	Universal Bracket	1
3	100021	Lift assist Bracket	1
4	200006	Channel Strut	4
5	2F0039	FL33 Light Bracket	2
6	100027	Slam Latch Assembly	1
7	100045	Collision Avoidance System Bracket	1
8	100054	Hinge Assembly	1
9	1F0040	Passenger Side Submount	1
10	1F0039	Driver Side Submount	1
11	2F0021	License Plate Bracket	1
12	400046	Air Deflector	1
13	1F0038	Mount Plate	2
14	100074	Spacer Plate	4
15	500121	BOLT-HEX 5/8-11X3 NC GR8 YZP	4
16	500214	WASHER-FLAT 5/8 SAE GR8 YZP	4
17	500085	BOLT-HEX 1/2-13X1-3/4 NC GR8 YZP	6
18	500206	WASHER-FLAT 1/2 SAE GR8 YZP	14
19	500313	BOLT-HEX 1/2-13X2 NC GR8 PLAIN	8
20	500263	WASHER-FLAT 1/2X1-1/2OD 1/4THICK	8
21	500167	NUT-NYLOCK 1/2-13 NC GR8 YZP	8
22	500095	BOLT-HEX 1/4-20X1 NC GR5 WZP	20
23	500208	WASHER-FLAT 1/4 SAE GR8 YZP	20
24	500169	NUT-NYLOCK 1/4-20 NC GR8 YZP	20

Installation Procedure

1. With the hood of the truck open, disconnect wiring to factory driving lights (if equipped) on both driver and passenger sides.



Figure 1 – Factory Driving Lights Disconnected (Passenger Side Shown).

2. Remove hood struts from OEM Bumper mounting brackets on both driver and passenger sides. Remove bolts that connect OEM bumper to truck frame. Retain strut mount hardware for further use. The OEM bumper can now be removed.

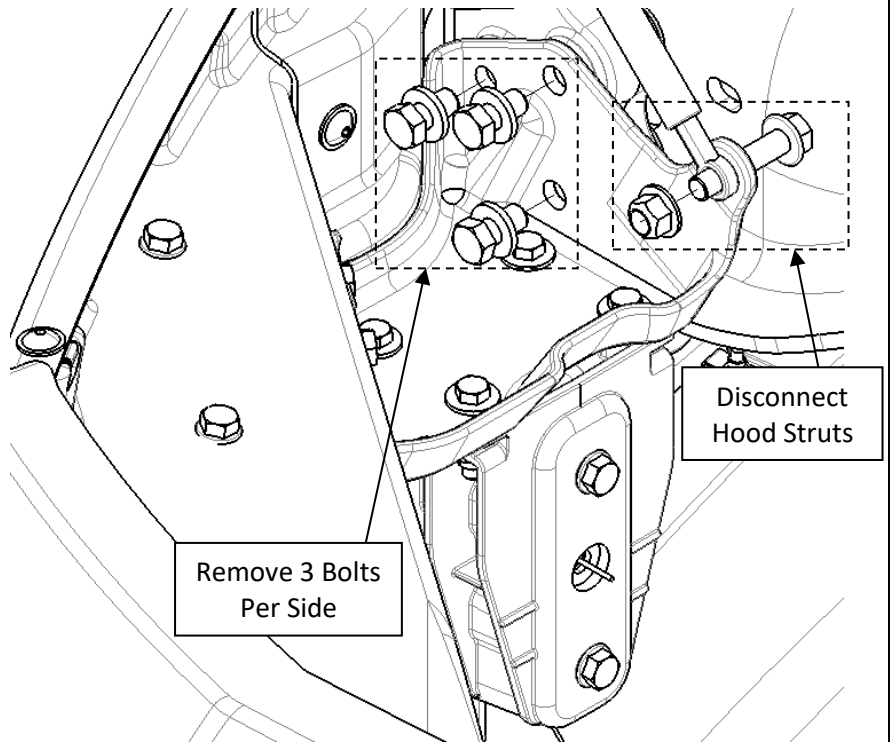


Figure 2 – Factory Bumper Mounting Bracket Removal (Driver Side Shown).

Installation Procedure

3. If the truck is equipped with a collision avoidance system (CAS), it must be removed. Disconnect the wiring that runs to the CAS unit before removing the screws as shown. Retain OEM hardware.

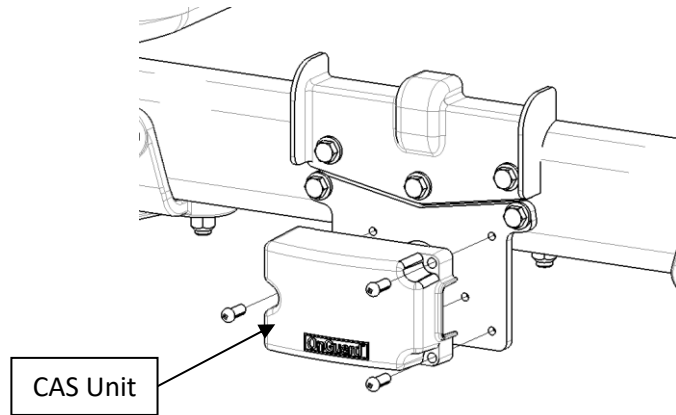


Figure 3 – CAS Unit Uninstall.

4. Remove the factory CAS bracket from the truck frame.

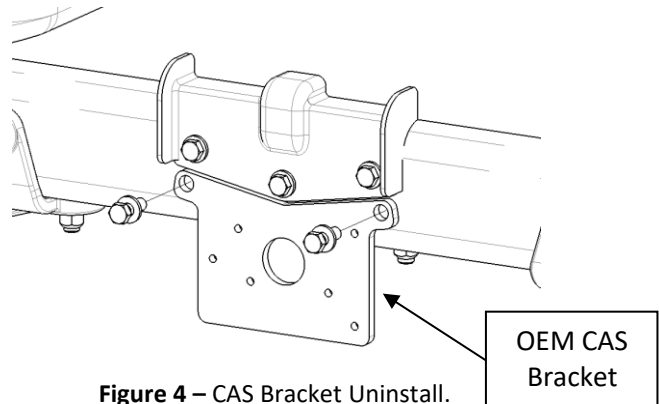


Figure 4 – CAS Bracket Uninstall.

5. From the underside of the truck frame, remove the front two bolts shown on both driver and passenger side (four bolts total).

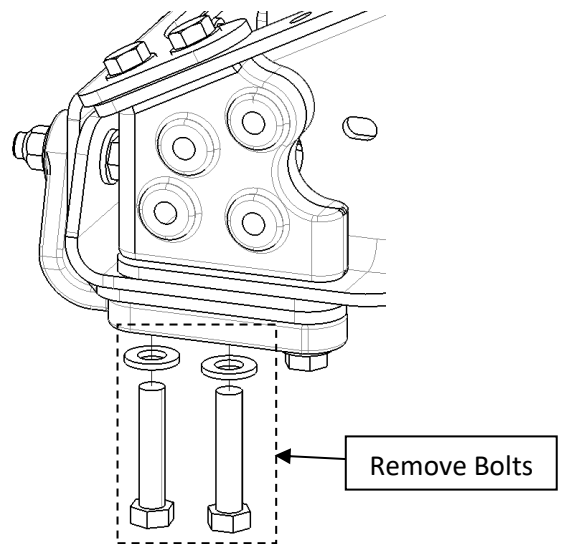


Figure 5 – Truck Frame Bolt Removal (Driver Side Shown).

Important

- The truck may come in either a wide rad or narrow rad configuration. In order to determine the correct truck configuration, see steps 6 and 7 to identify typical features of each truck frame.

Installation Procedure

6. Attach driver side submount (Item 10) and passenger side submount (Item 9) to truck frame. For wide rad truck models, position mount plate (Item 13) between submount and truck frame as shown for both driver and passenger sides.

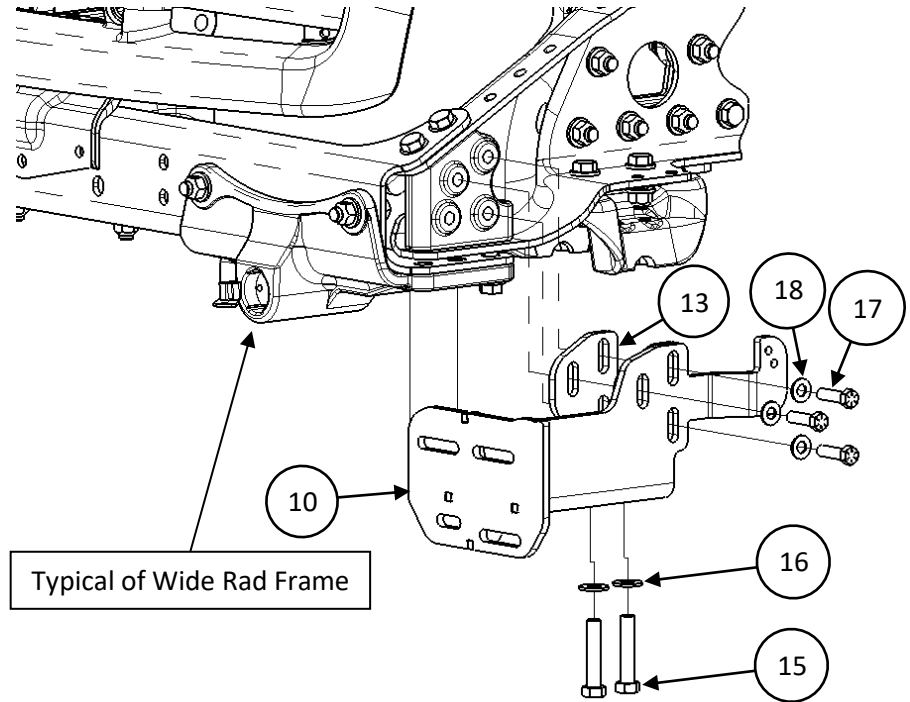


Figure 6 – Wide Rad Model Submount Installation (Driver Side Shown).

7. For narrow rad truck models, position mount plate (Item 13) between bolts and submount as shown. Position two spacer plates (Item 14) between submount and truck frame as shown. Fasten both driver side and passenger side submounts.

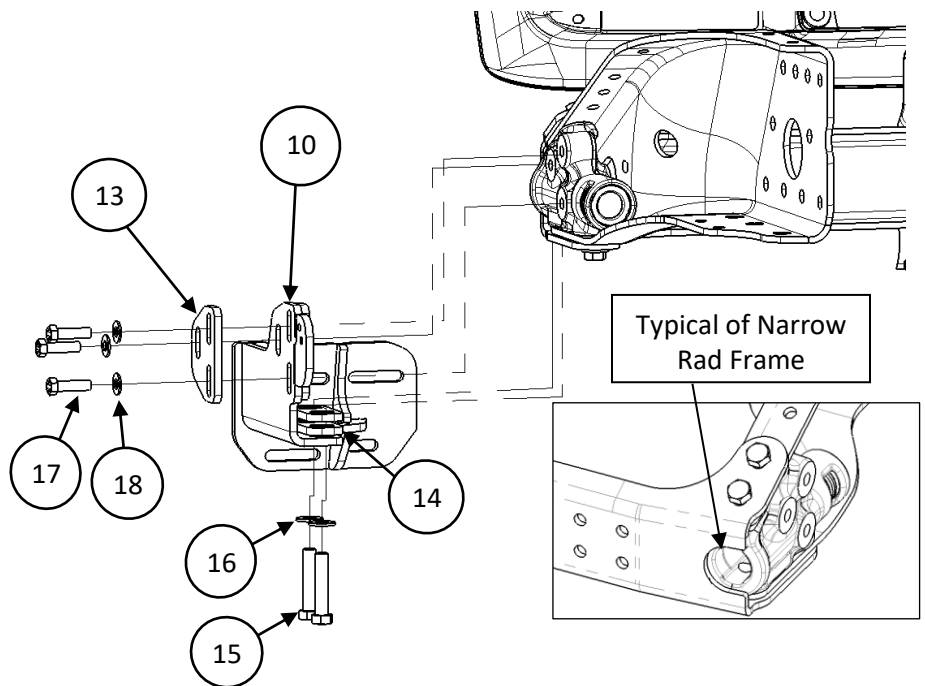


Figure 7 – Narrow Rad Model Submount Installation (Driver Side Shown).

Installation Procedure

8. Reattach hood struts to HERD submounts on both driver side and passenger side, reusing OEM hardware.

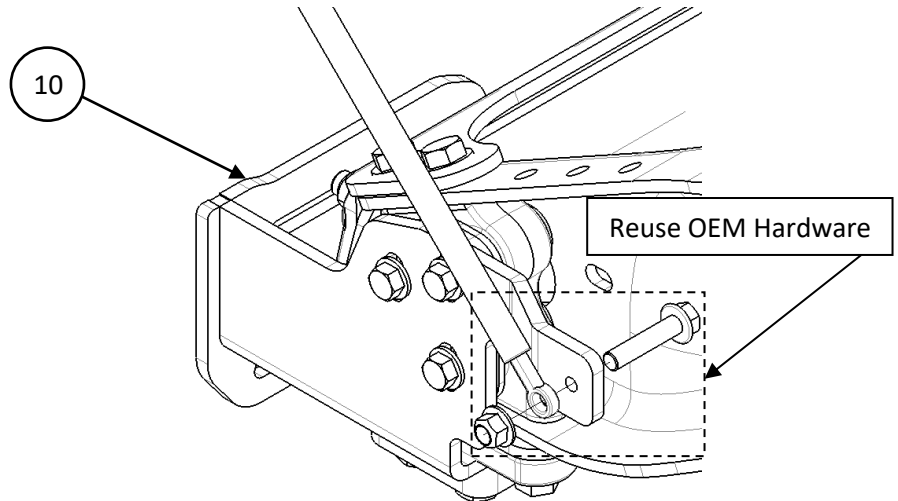


Figure 8 – Hood Strut Reinstallation (Driver Side Shown).

9. Open guard by pulling on the handle. Using crane, lift the guard (Item 1) and universal bracket (Item 2) then attach to HERD submounts (Items 9 & 10).

Note:

If installer does not have a crane available, the guard can be disassembled from the universal bracket to simplify installation as shown in step 10, otherwise proceed to step 11.

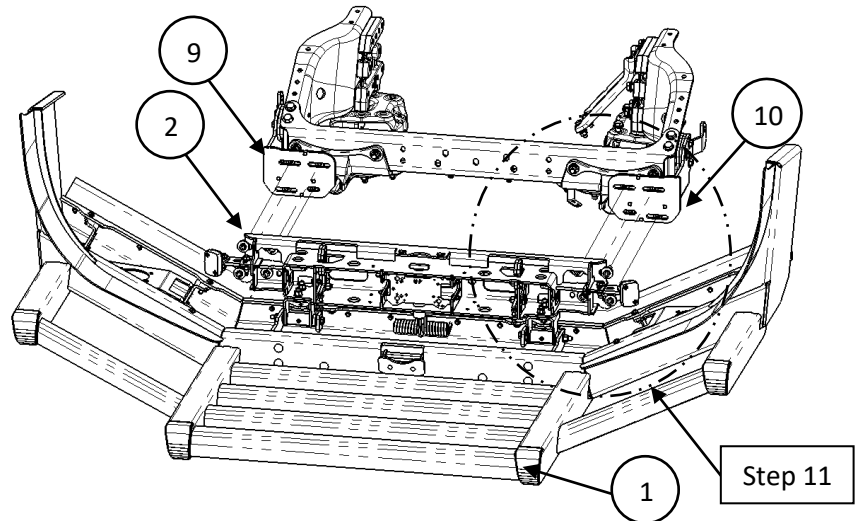


Figure 9 – Universal Bracket Installation.

Installation Procedure

10. a) Ensure bumper is closed. From underneath the bumper, remove the 3/8" hardware securing the lift assist springs and slide off springs from the lift assist (Item 3).

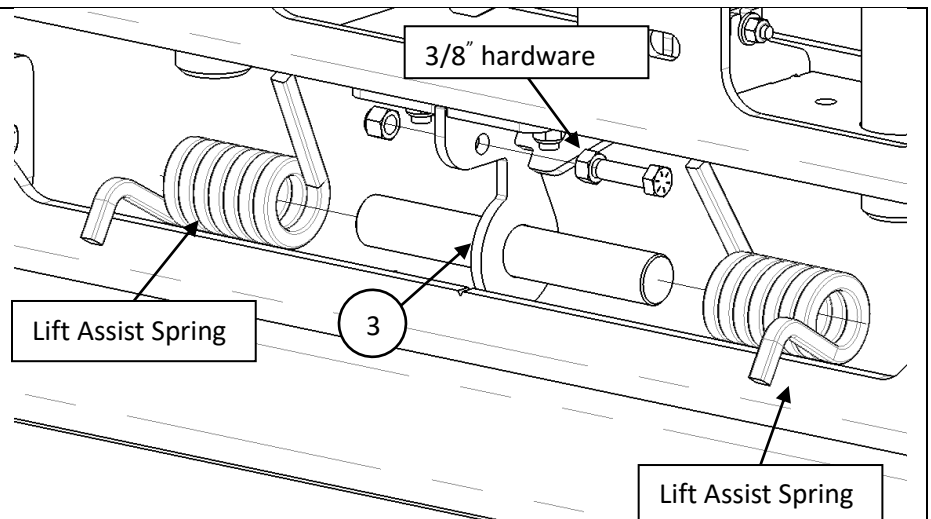


Figure 10a – Spring Assist Disassembly.

- b) Once the springs are removed, carefully open the bumper using the slam latch. Remove the 1/2" hardware securing the bumper to the universal bracket. Remove bumper and set aside on cardboard. Now the bracket is isolated for mounting without a lift.

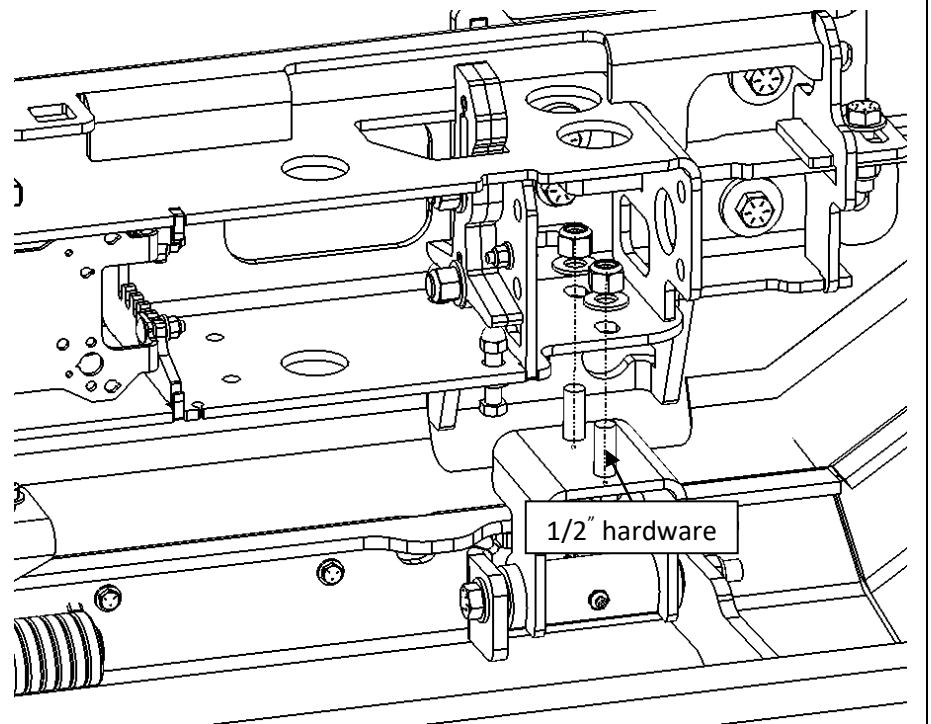


Figure 10b – Bracket and Bumper Disassembly (Driver's Side Shown).

Installation Procedure

11. Attach universal bracket (Item 2) to driver side and passenger side submounts (Items 9 & 10) using the provided hardware as shown.

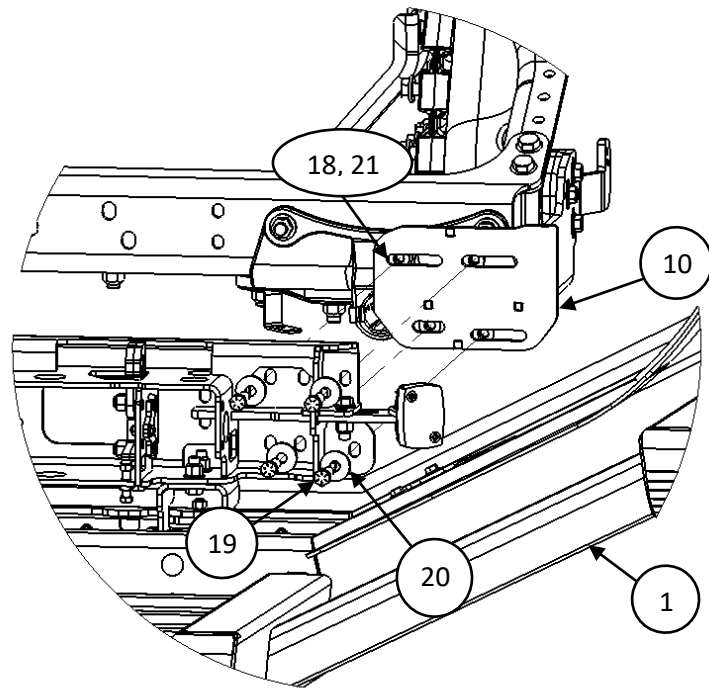


Figure 11 – Universal Bracket Installation Detail View (Driver Side Shown).

12. If bumper was disconnected from the universal bracket in step 6, reverse the procedure to mount bumper back onto the bracket.
- a) First ensure the bumper hinges are open.
 - b) Attach using previously removed 1/2" bolts until the hinge just slightly touches the bracket.
 - c) Close the bumper and ensure the latch engages.
 - d) Open the bumper and tighten the bolts until they are snug.
 - c) Close the bumper again to ensure the latches engage properly.

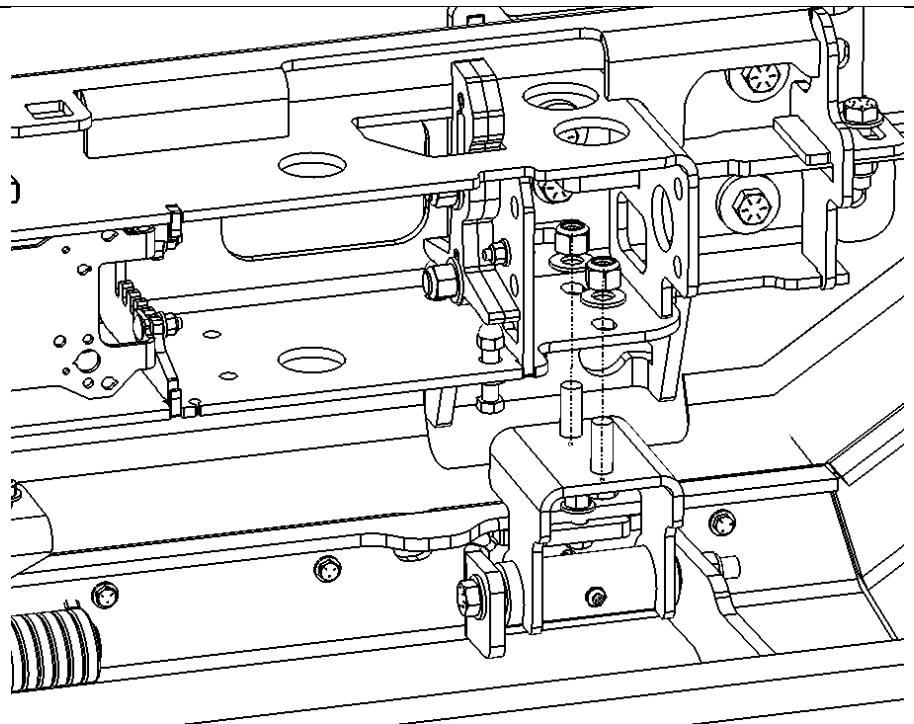


Figure 12.1 – Bracket and Hinge Reassembly

Installation Procedure

d) Fully tighten the ½" hardware to 110 ft·lb. Latches may need to be adjusted, refer to Slam Latch Adjustment guide (S012).

e) Close the bumper and slide springs onto the lift assist shaft, ensuring that spring arms are inserted into slots of bumper. Reinsert 3/8" hardware securing the lift assist springs.

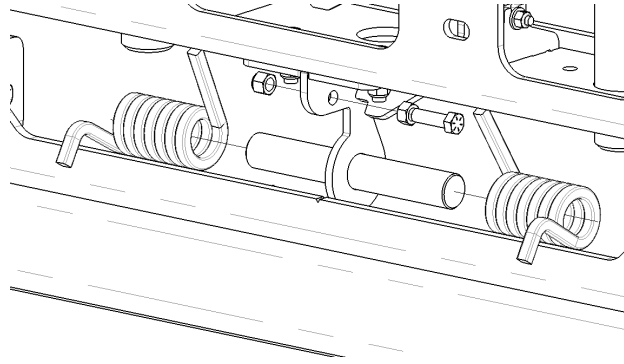


Figure 12.2 – Lift Assist Reassembly.

13. If equipped with OEM driving lights, remove driving lights from factory bumper and retain OEM hardware. Remove driving light bracket (Item 5) from HERD Guard and install factory lights using OEM hardware. Do this for both driver side and passenger side.

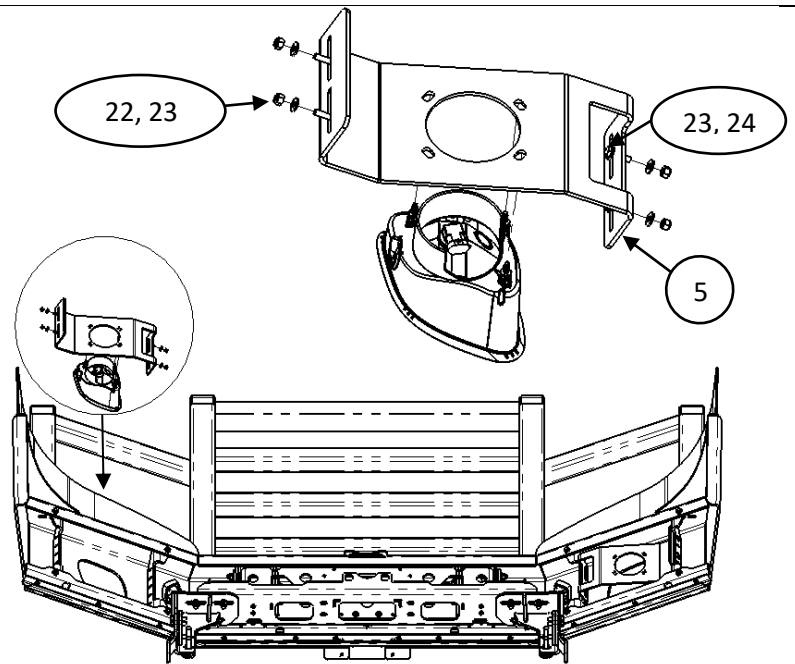


Figure 13 – Driving Lights Installation.

Installation Procedure

14. Close the guard and check fitment. Guard position can be adjusted side to side and up or down as required. Once fitment is confirmed, tighten all mounting bolts. Reattach wiring to driving lights.

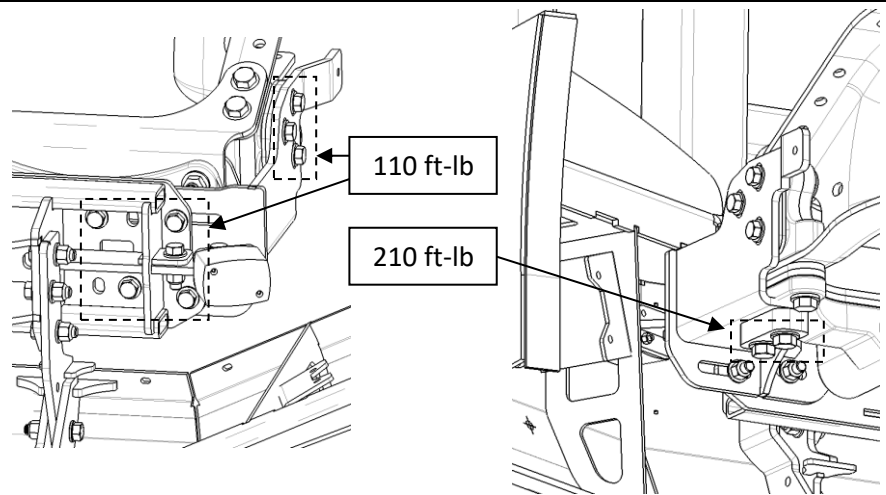


Figure 14 – Bolt Torque Specs (Driver Side Shown).

15. Install the air deflector (Item 12) to the Bumper (Item 1) as shown using the supplied hardware (Items 22, 23, 24).

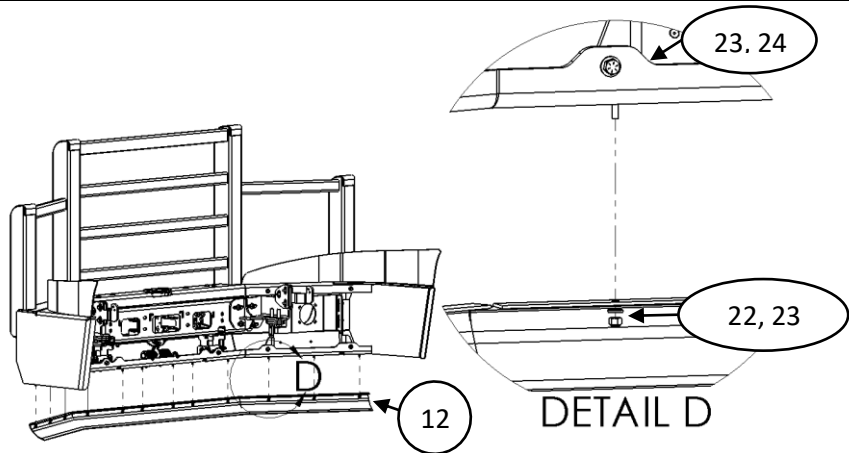


Figure 15 – Radar Sensor Unit Installation.

16. If the truck was equipped with radar sensor, install radar sensor onto Herd sensor bracket using the OEM hardware. Reattach wiring to the radar sensor unit.

Note:

To install sensor unit, refer to Herd Radar Sensor Installation Guide (S009).

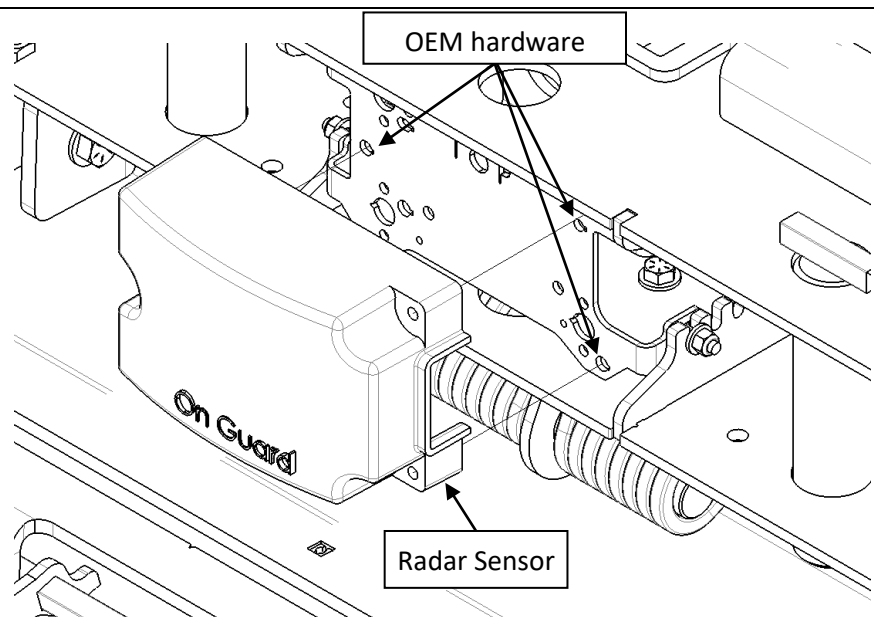


Figure 16 – Radar Sensor Unit Installation.

Installation Procedure

17. If installing surface-mount signal lamps, 4LMPA001, apply at max 85 in-lbs (7ft-lbs, 9.6Nm)

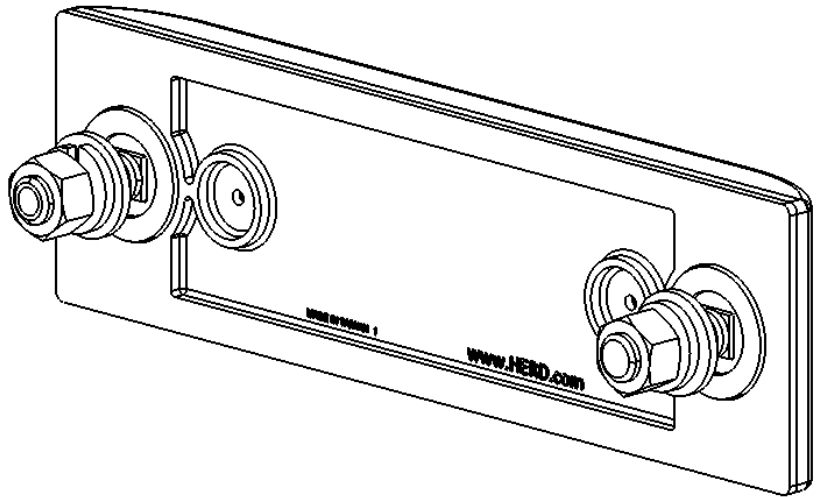


Figure 17 – Signal Light Installation.

Important

- Check mounting points after the first 5000 km and every 3-6 month.
- This bumper is equipped with HERD Slam Latch which requires periodic adjustment. Refer to Slam Latch Installation adjustment instructions (S012) to properly adjust your Slam Latch.