

This Guide is for all Truck Guard Models, including (where applicable):
Aero
Defender
Texas
Big Texas
Road Train
Super Road Train

Thank you for choosing HERD!

For assistance call
1-888-543-4373
www.HERD.com

Truck I.D.	Truck Models
PB11	Peterbilt 365 / 367 / 567 - Slopped Hood - SBA
	

Important

- Herd Truck Guards are vehicle "Make & Model" specific. Use of a Truck Guard on a vehicle other than the model it was designed for will constitute improper use of the product and may void warranty.
- Unless otherwise specified, Grade 8 or Class 10.9 hardware is to be used. For the purposes of these instructions, OE hardware means the truck's original factory hardware.
- For further detail of warranty coverage and warranty repair information visit www.HERD.com.

General Safety

- Take time to fully read the instructions before installing the Herd Truck Guard.
- At all times exercise safe work shop practices, wear steel toe boots and safety glasses during installation.
- Parts and components of the Herd Truck Guard can be heavy, handle with care to avoid injuries.
- Respect power tools and use them as advertised.

Reference this Parts List if your Truck Guard has a CEB (Captive Eye Bolt) Latching System

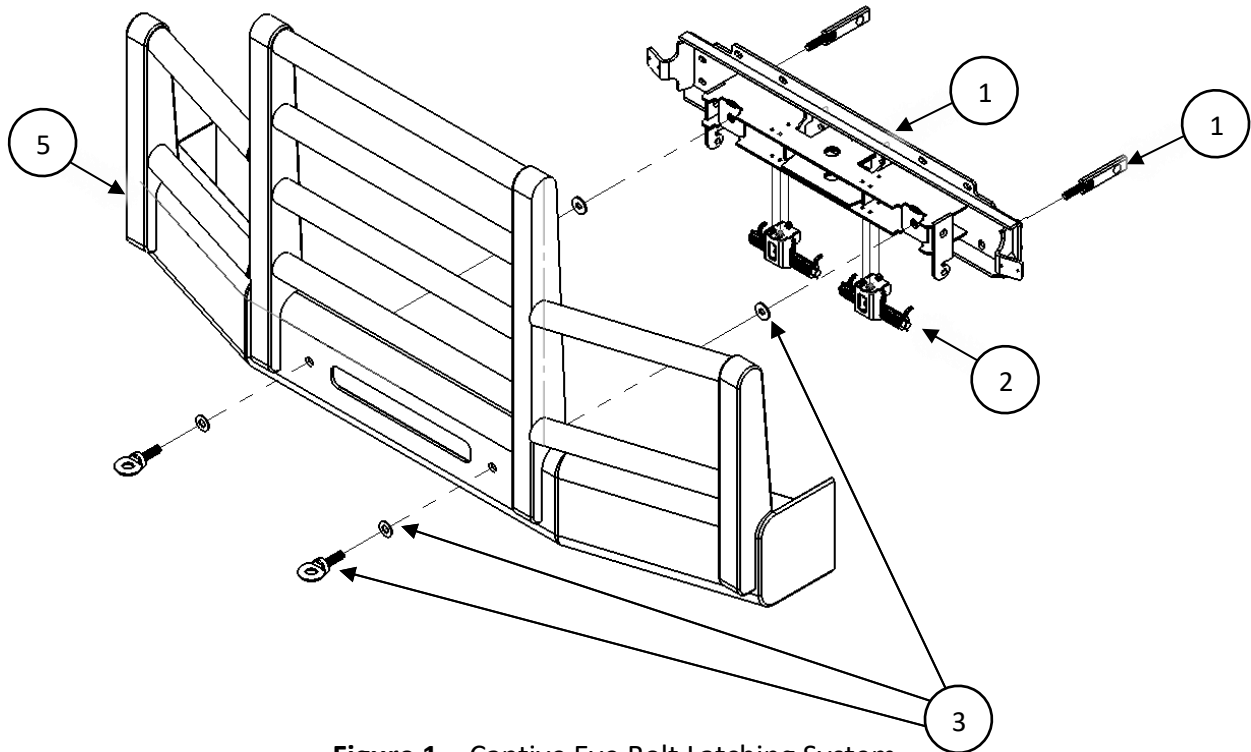


Figure 1 – Captive Eye Bolt Latching System

Table 1: Parts and Hardware Included

Item No	Part No	Description	Qty
1	BR-PB11-AT (Only with Aero, Road Train, Super Road Train, Texas, & Big Texas Versions) or BR-PB11-FLT (Only with Defender Version)	BRACKET, PETERBILT, 365 / 367 / 567 - Slopped Hood - SBA	1
2	1MPA027 (Only with Aero, Road Train, Super Road Train, Texas, & Big Texas Versions) or 1MPA024 (Only with Defender Version)	ASSY - LEGACY LIFT ASSIST	2
3	7-EYEBOLT KIT	CAPTIVE EYEBOLT ASSEMBLY	2
5	HERD TRUCK GUARD	TRUCK GUARD APPEARANCE MAY VARY BY SKU	1
*6	1-BR-PAC-1PIPEx52	PACKER, 1" PIPE X 52MM LONG	4
*7	500172	NUT-NYLOCK 3/4-10 NC GR8 YZP	2
*8	500211	WASHER-FLAT 3/4 SAE GR8 YZP	2
*9	500214	WASHER-FLAT 5/8 SAE GR8 YZP	8
*10	500206	WASHER-FLAT 1/2 SAE GR8 YZP	8
*11	500142	BOLT-HEX M16X2X100 CL10.9 YZP	4
*12	500182	NUT-NYLOCK M16X2.0 CL10.9 YZP	2
*13	500138	BOLT-HEX M12X1.75X100 CL10.9 YZP	4

Items marked with * are not shown in Figure 1 above

Reference this Parts List if your Truck Guard has a Slam Latch Latching System

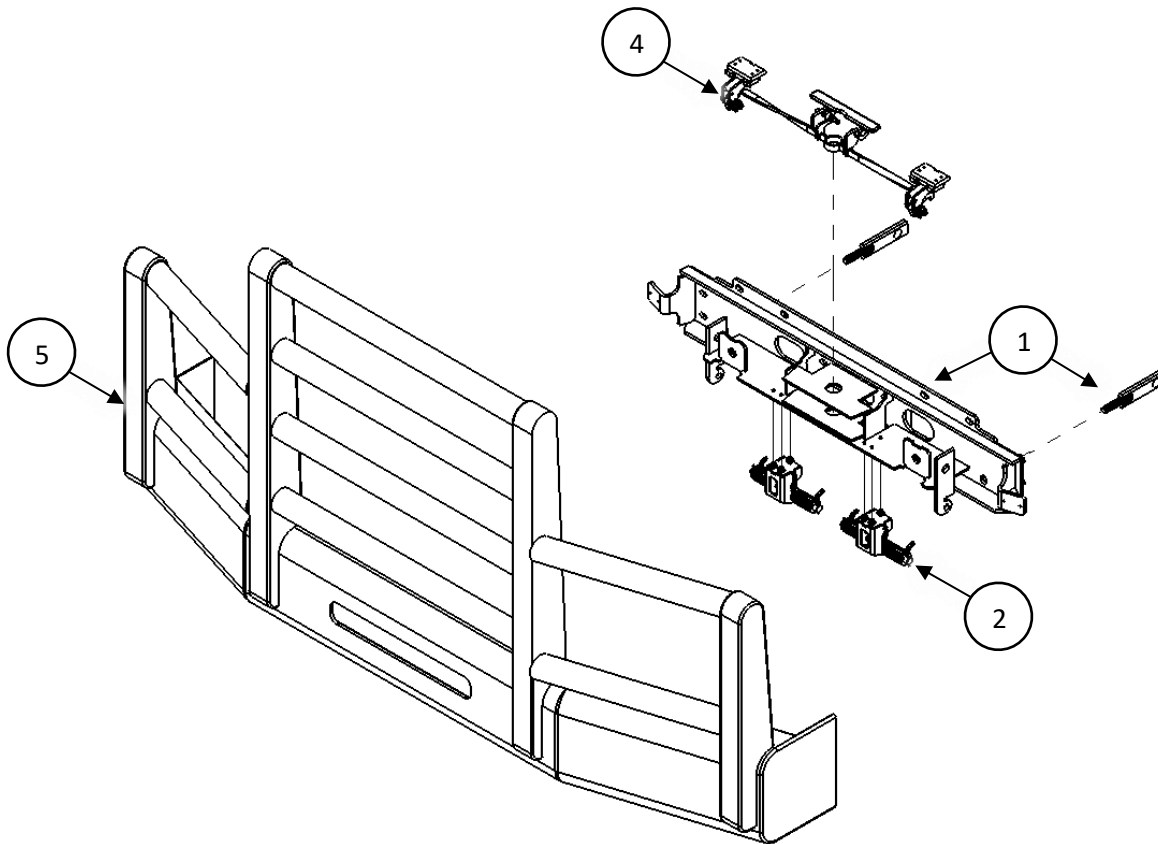


Figure 2 – Slam Latch Latching System

Table 2: Parts and Hardware Included

Item No	Part No	Description	Qty
1	BR-PB11-AT-SL (Only with Aero, Road Train, Super Road Train, Texas, & Big Texas Versions) or BR-PB11-FLT-SL (Only with Defender Version)	BRACKET, PETERBILT, 365 / 367 / 567 - Slopped Hood - SBA	1
2	1MPA027 (Only with Aero, Road Train, Super Road Train, Texas, & Big Texas Versions) or 1MPA024 (Only with Defender Version)	ASSY - LEGACY LIFT ASSIST	2
4	4-MC-SLA-A	ASSY- LEGACY SLAM LATCH	1
5	HERD TRUCK GUARD	TRUCK GUARD APPEARANCE MAY VARY BY SKU	1
*6	1-BR-PAC-1PIPEx52	PACKER, 1" PIPE X 52MM LONG	4
*7	500172	NUT-NYLOCK 3/4-10 NC GR8 YZP	2
*8	500211	WASHER-FLAT 3/4 SAE GR8 YZP	2
*9	500214	WASHER-FLAT 5/8 SAE GR8 YZP	8
*10	500206	WASHER-FLAT 1/2 SAE GR8 YZP	8
*11	500142	BOLT-HEX M16X2X100 CL10.9 YZP	4
*12	500182	NUT-NYLOCK M16X2.0 CL10.9 YZP	2
*13	500138	BOLT-HEX M12X1.75X100 CL10.9 YZP	4

Items marked with * are not shown in Figure 2 above

Installation Procedure

1. Remove the 4 OEM bolts on the front of the OEM bumper and 8 OEM bolts behind the bumper as shown. Retain factory hardware for use in mounting bracket.

Remove the OEM bumper. If factory center tow pin is an option on the truck, remove it as well. If the truck has a collision mitigation radar sensor, unplug and remove it.



Figure 3 – OEM Bumper Removal Front View.



Figure 4 – OEM Bumper Removal Back View (Passenger Side Shown)

Installation Procedure

2. Install Tow receiver inserts (Part of Item 1) supplied with bracket into OEM tow receivers and use factory clevis pins to secure in position. Do this for both passenger and driver sides.

Install Herd steel bracket to truck using the supplied 3/4" nuts (Item 7) and 3/4" washers (Item 8). Tighten fasteners to 70-80 ft-lbs. Do not overtighten.

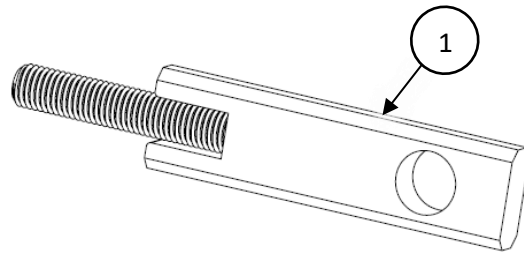


Figure 5 – Tow Receiver Insert

3. If installing the Truck Guard on a **Peterbilt 365** or **Peterbilt 367** model truck, use the 12 mounting points as seen in Figure 6. Use the supplied M12 Bolts (Item 13) to fasten the top four mounting points. Use the supplied M16 hardware (Items 11, 12) to fasten the center four mounting points. Use the OEM hardware retained in Step 1 on the outermost mounting points.

Use the supplied Packers (Item 6) to space out the outermost mounting points on both the passenger and driver sides. See Figure 7.

Note:

If installer has a crane available, truck guard can be attached onto truck with bracket, otherwise disassemble truck guard from bracket first. Keep hardware. If bumper is equipped with lift assist, the springs must be removed. Refer to instructions S004 (Defender bumpers) or S005 (Aero/Texas bumpers) for proper lift assist disassembly procedure.

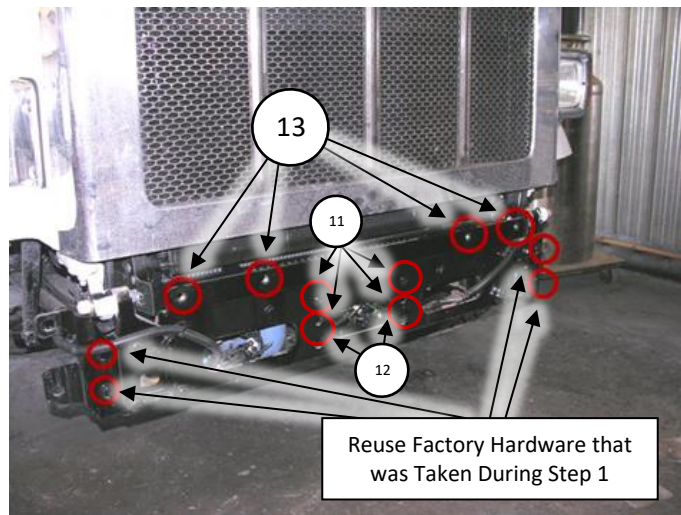


Figure 6 – Bracket Installation Front View (PB 365 & PB 367)

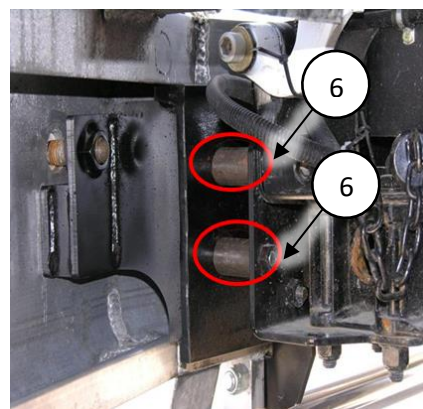


Figure 7 – Bracket Installation Side View (PB 365 & PB 367)

Installation Procedure

4. If installing the Truck Guard on a **Peterbilt 567** model truck, use the 8 mounting points as seen in Figure 8. Use the supplied M12 Bolts (Item 13) to fasten the top four mounting points. Use the supplied M16 hardware (Items 11, 12) to fasten the center four mounting points.

The use of supplied Packers (Item 6) is not needed on the PB 567. See Figure 9.

Note:

If installer has a crane available, truck guard can be attached onto truck with bracket, otherwise disassemble truck guard from bracket first. Keep hardware. If bumper is equipped with lift assist, the springs must be removed. Refer to instructions S004 (Defender bumpers) or S005 (Aero/Texas bumpers) for proper lift assist disassembly procedure.

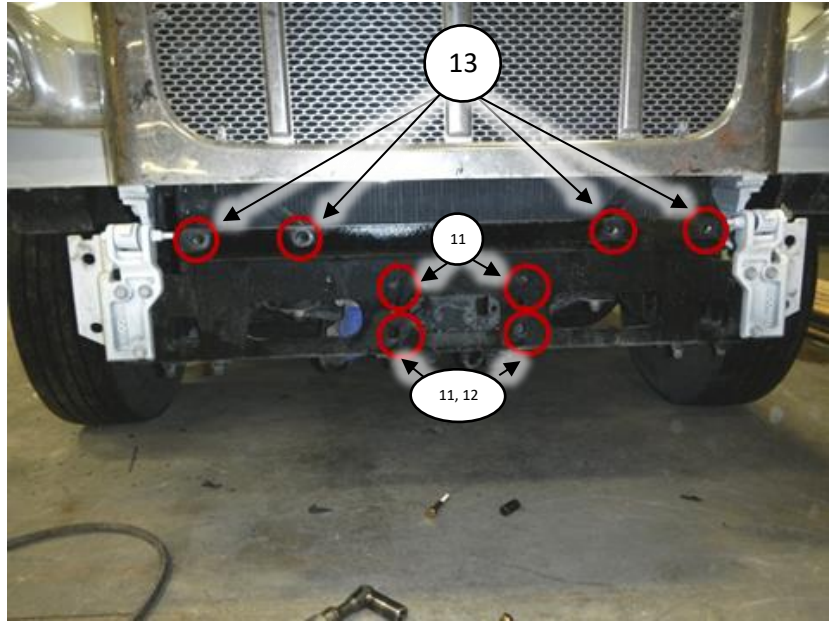


Figure 8 – Bracket Installation Front View (PB 567)



Figure 9 – Bracket Installation Side View (PB 567)

Installation Procedure

5. If the Herd Truck Guard was disassembled from bracket in step 3 or 4, reinstall Herd Truck Guard onto bracket using the hardware kept from step 3 or 4.

For DFLT & Defender models only: To install the hinge bolts, the bumper must be in the open (down) position to allow the bottom lip to go under and around the steel hinge.



Figure 10 – View of Bracket Hinge

6. Close the truck guard and check fitment. Truck guard position can be adjusted side to side and up or down as required. Once fitment is confirmed, tighten all mounting bolts. Torque 3/4" hardware to 75lb-ft. Torque 1/2" and 5/8" hardware to 110lb-ft. Torque M12 hardware to 80 lb-ft. Torque M16 hardware to 200lb-ft.



Figure 10 – Herd Truck Guard Installed

Important

- Check mounting points after the first 5000 km and every 3-6 months.
- If this truck guard is equipped with Legacy Herd Slam Latch, periodic adjustment is required. Refer to Legacy Slam Latch Installation adjustment instructions to properly adjust your Slam Latch.
- The drop-forged eyebolts are an integral part of the strength of Herd Truck Guards. When tightened firmly, they will minimize vibration and provide superior impact resistance.
- To help maintain the factory finish, avoid acid wash.