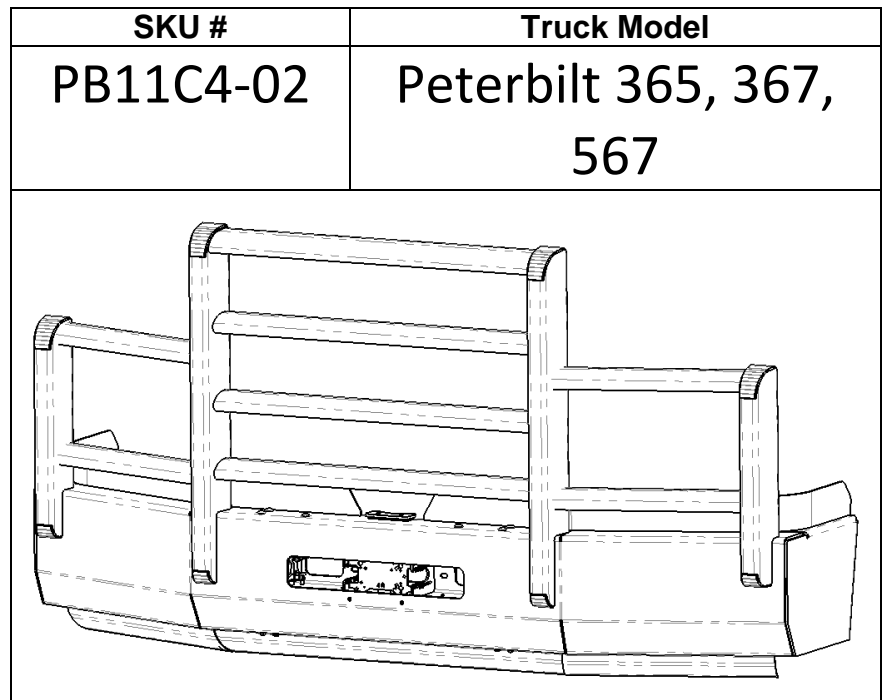


Thank you for choosing HERD!

For assistance call
1-888-543-4373
www.HERD.com



Important

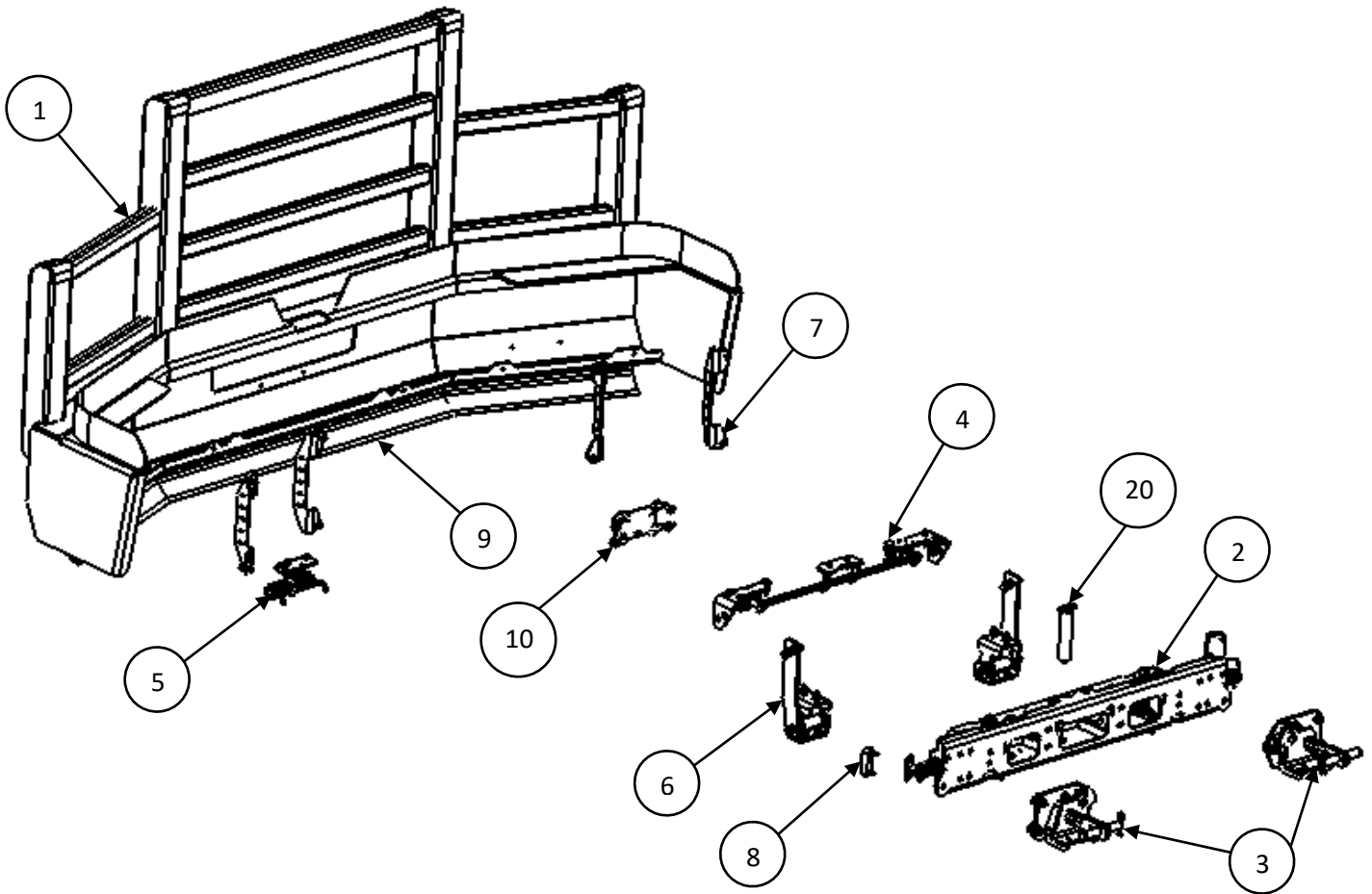
- Herd Truck Guards are vehicle "Make & Model" specific. Use of a Truck Guard on a vehicle other than the model it was designed for will constitute improper use of the product and may void warranty.
- Unless otherwise specified, Grade 8 or Class 10.9 hardware is to be used. For the purposes of these instructions, OE hardware means the truck's original factory hardware.
- For further detail of warranty coverage and warranty repair information visit www.HERD.com.

General Safety

- Take time to fully read the instructions before installing the Herd Truck Guard.
- At all times exercise safe work shop practices, wear steel toe boots and safety glasses during installation.
- Parts and components of the Herd Truck Guard can be heavy, handle with care to avoid injuries.
- Respect power tools and use them as advertised.

HERD North America Inc.
2168 Springfield Road
Box 28, Group 525, RR5
Winnipeg, MB. Canada R2C 2Z2

Parts and Tools Referenced in this Installation Guide

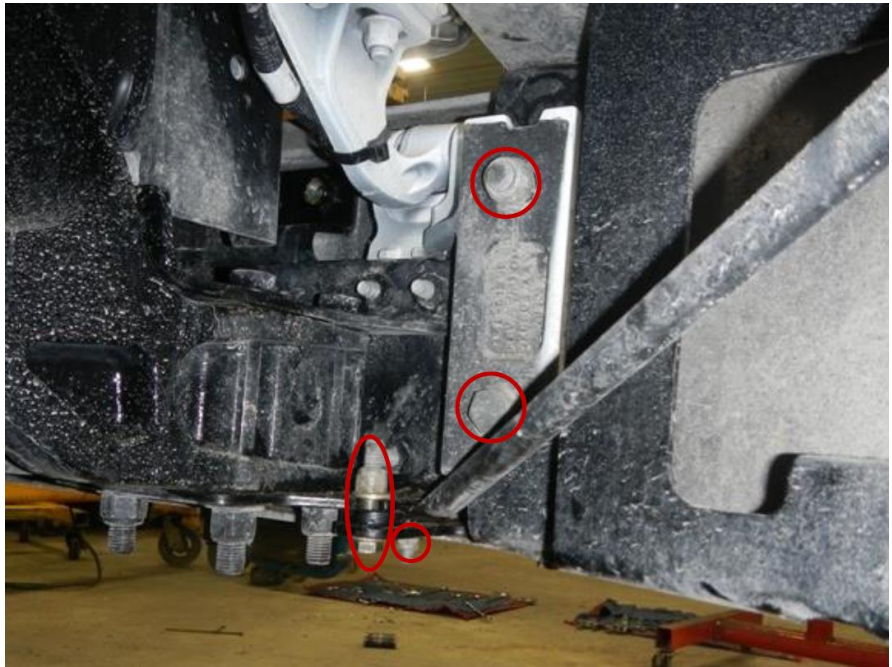
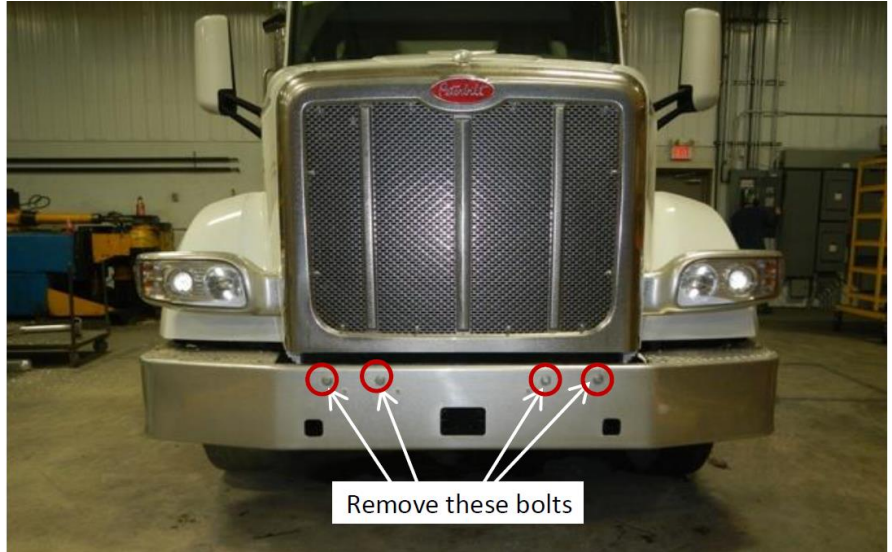


Parts and Hardware Included

Item No	Part No	Description	Qty
1	2P6004	WLDMT-TRUCK GUARD PB11C4-02	1
2	100062	ASSY-UNIVERSAL BRACKET	1
3	1P6023	KIT – MOUNTING PB11C4-02	1
4	100027	C4-02 SLAM LATCH ASSEMBLY	1
5	100021	ASSY-LIFT ASSIST	1
6	100054	ASSY-HINGE	1
7	100058	KIT-CHANNEL STRUT	4
8	400014	KIT-RUMBER 20 MM	2
9	400040	KIT-AIR DEFLECTOR PB11	1
10	100046	KIT-CAS BRACKET	1
11	500167	NUT-NYLOCK 1/2-13 NC GR8 YZP	10
12	500263	WASHER-FLAT 1/2X1-1/2OD 1/4THICK	10
13	500206	WASHER-FLAT 1/2 SAE GR8 YZP	10
14	500169	NUT-NYLOCK 1/4-20 NC GR8 YZP	12
15	500208	WASHER-FLAT 1/4 SAE GR8 YZP	24
16	500095	BOLT-HEX 1/4-20X1 NC GR5 WZP	12
17	500173	NUT-NYLOCK 3/4-16 NF GR8 YZP	2
18	500211	WASHER-FLAT 3/4 SAE GR8 YZP	2
19	500085	BOLT-HEX 1/2-13X1-3/4 NC GR8 YZP	10
20	100049	WLDMT-TOW PIN	1

Installation Procedure

1. With the hood of the truck closed, remove the bolts shown on each side of the bumper. OEM bumper can be removed.



Factory bumper uninstal (Passenger side shown)

Figure 1 – OEM Bumper Uninstall

Installation Procedure

2. Install HERD mounting brackets onto truck frame. Do not tighten bolts until installation is complete.



Figure 2 – OEM Bumper Mount Removed from the truck

3. Install tow receiver mounts (From Item 3) into truck tow receivers. Remove the OEM bolts indicated by arrows.

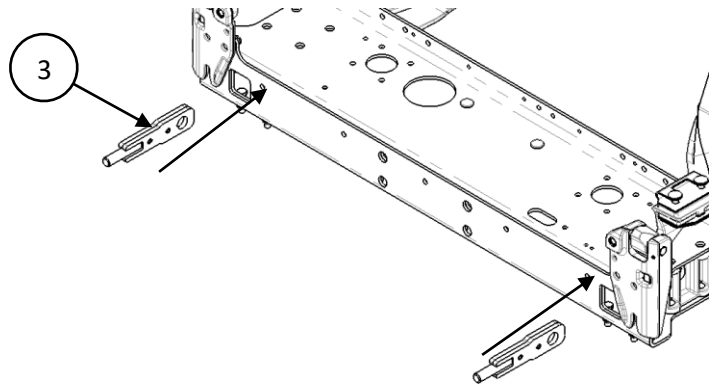


Figure 3 – Tow Receiver Mounts Installation

4. Install clevis pins (From Item 3) through OEM tow receiver holes and HERD tow receiver mounts. Install hair pins into the clevis pins from the PB11 Mounting Kit (Item 3).

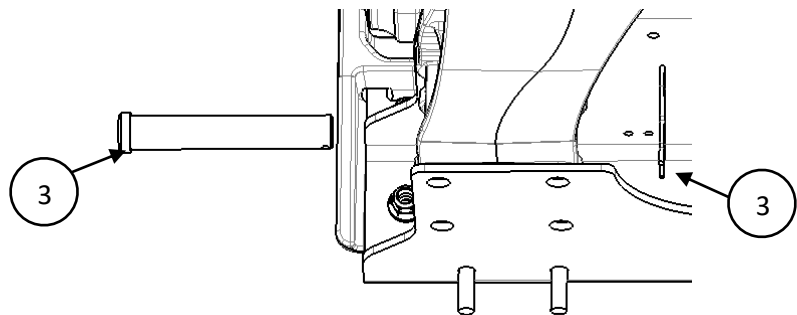


Figure 4 – Tow Receiver Clevis & Hair Pins Installation

Installation Procedure

5. Install driver side mounting brackets (Item 3). Use $\frac{3}{4}$ " flat washers (Item 17) and nylon locking nuts (Item 16) to attach the mounting brackets to the tow receiver mounts, torque to 150 lb-ft. Use the OEM washers and bolts saved from Step 2 on the bottom of the mounts, torque to 110 lb-ft. Use M16x2x50 and flat washer 5/8 to mount the top side of the mounting bracket to the truck (Items 18 and 19). Try mount the sub-mount level with respect to the truck's frame.

6. Repeat for the passenger side

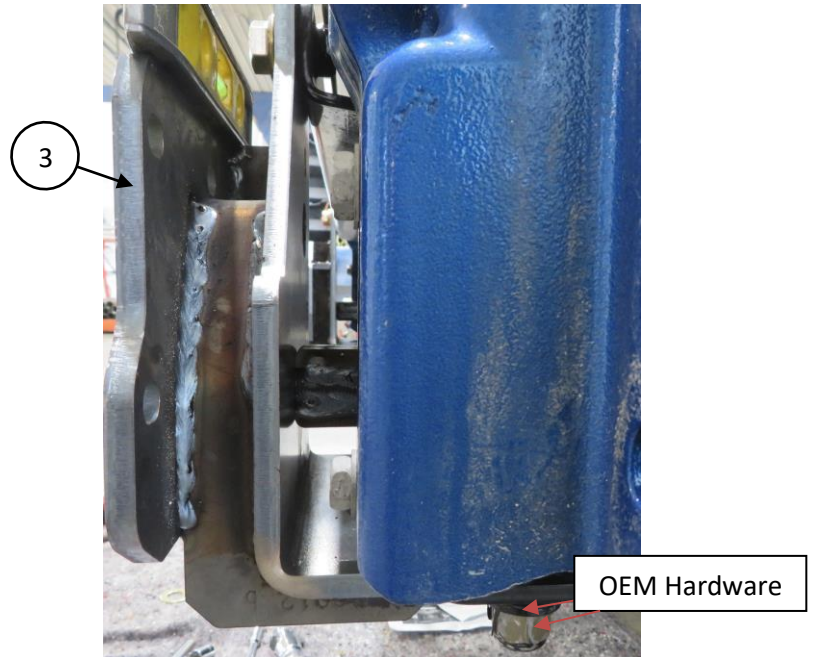
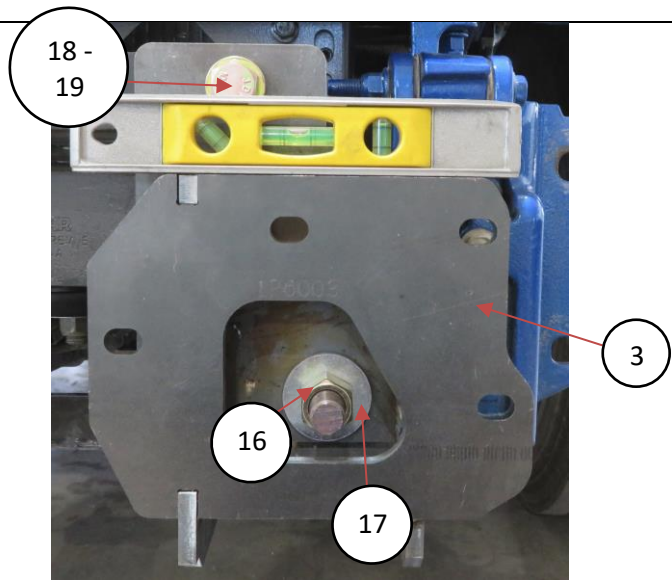


Figure 5 – Side Mounting Bracket Installation

Driver side

Installation Procedure

7. Open truck guard by pulling on the handle. Using lift, raise the Truck Guard (Item 1) and universal bracket (Item 2) and attach to side mounting brackets (Items 3). Do not tighten the nuts.

Note:

If installer does not have a lift available, truck guard can be disassembled from the universal bracket to simplify installation as shown in step 7, otherwise proceed to step 8.

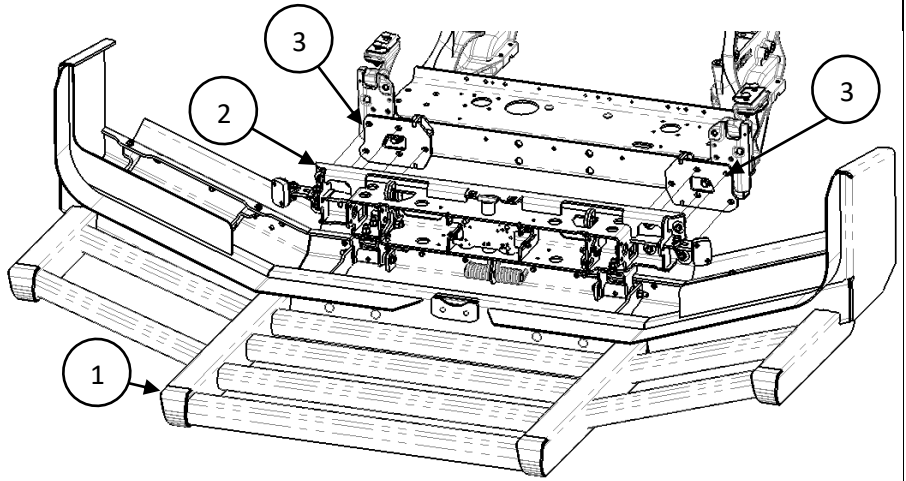


Figure 6 – Universal Bracket Installation

8. a) Ensure truck guard is closed. From underneath the truck guard, remove the 3/8" hardware securing the lift assist spring and slide off spring from the lift assist (item 5)

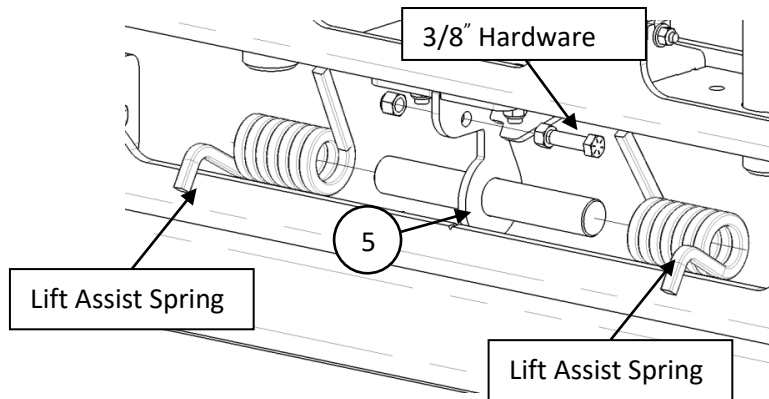


Figure 7a – Bracket and Lift Assist Disassembly

Installation Procedure

b) Once the springs are removed, carefully open the truck guard using the slam latch. Remove the 1/2" hardware securing the truck guard to the universal bracket. Remove truck guard and set aside on cardboard. Now the bracket is isolated for mounting without a lift.

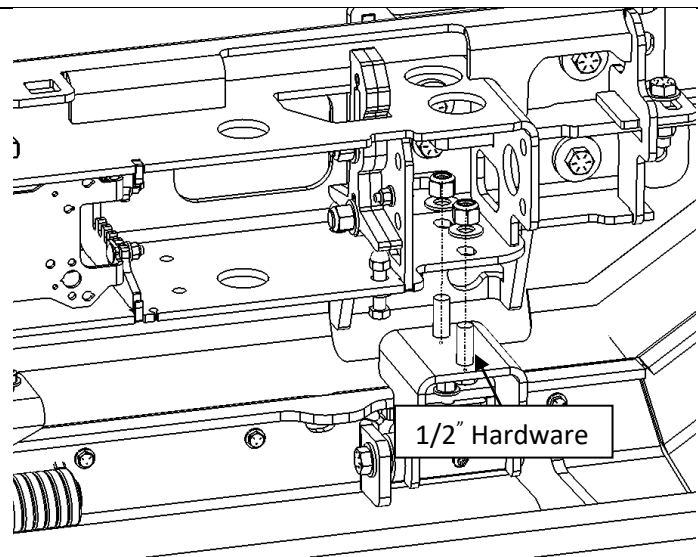


Figure 7b – Bracket and Truck guard Disassembly (Driver Side Shown)

9. Attach universal bracket (Item 2) to mounting brackets (Items 3). Level the bar to the truck and then tighten the fasteners (110 lb-ft). Use all the available slots for mounting. Note that the schematic view of the bracket may differ from what can be seen in Figure 8.

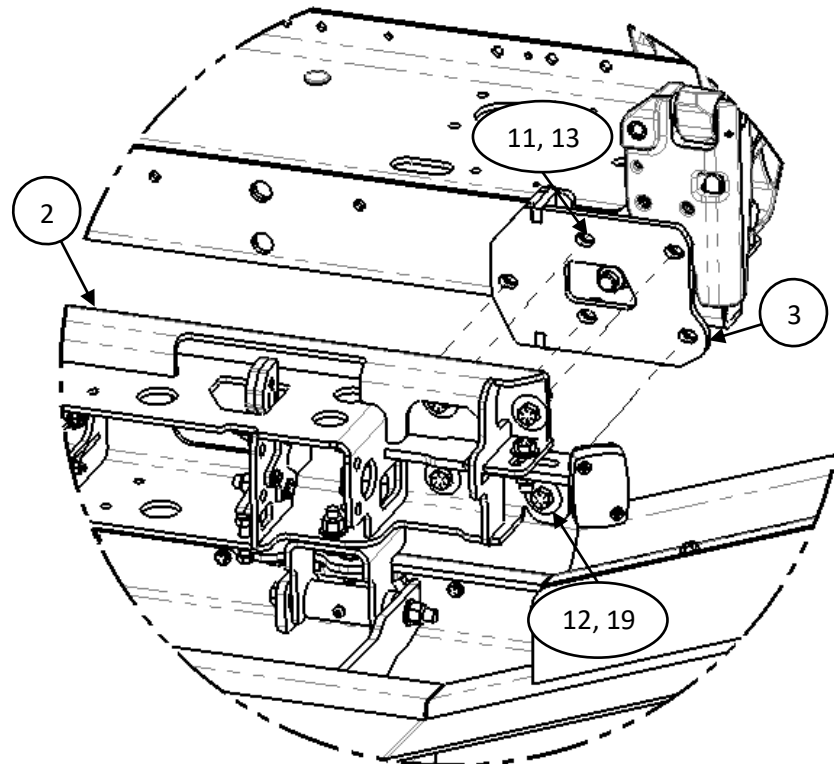


Figure 8 – Universal Bracket Side Mounting Location (Driver Side Shown)

- 10.** If truck guard was disconnected from the universal bracket in step 7, reverse the procedure to mount truck guard back onto the bracket.
- a) First ensure the truck guard hinges are open.
 - b) Attach using previously removed 1/2" bolts until the hinge just slightly touches the bracket.
 - c) Close the truck guard and ensure the latch engages.
 - d) Open the truck guard and tighten the bolts until they are snug.
 - e) Close the truck guard again to ensure the latches engage properly.
 - f) Fully tighten the 1/2" hardware to 110 ft·lb. Latches may need to be adjusted, refer to Slam Latch Adjustment guide (S012).
 - g) Close the truck guard and slide springs onto the lift assist shaft, ensuring that spring arms are inserted into slots of truck guard. Reinsert 3/8" hardware securing the lift assist springs.

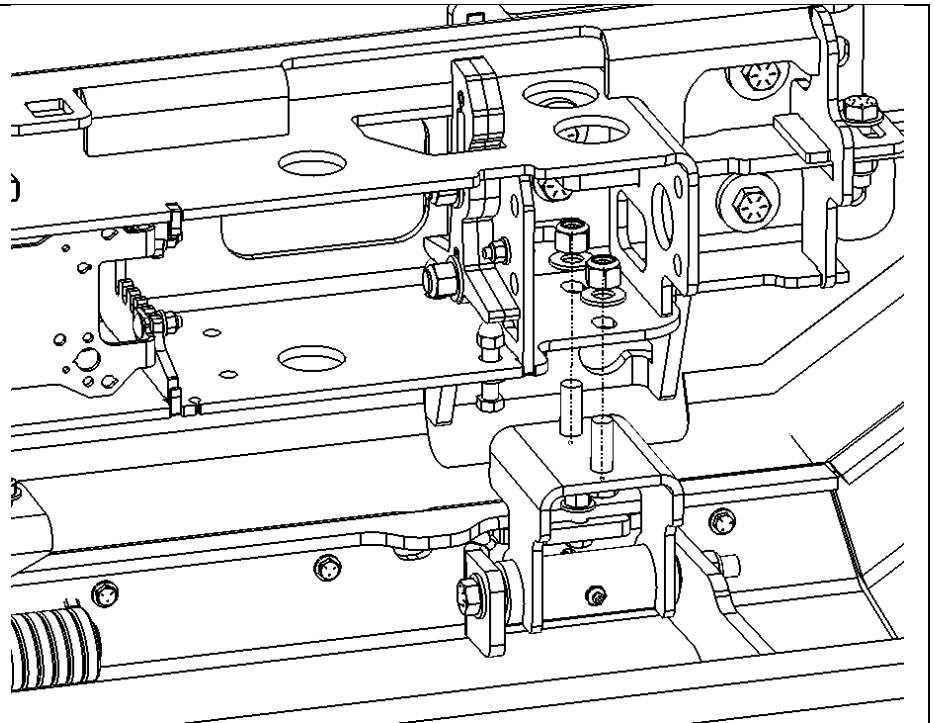


Figure 9.1 – Bracket and Lift Assist Reassembly

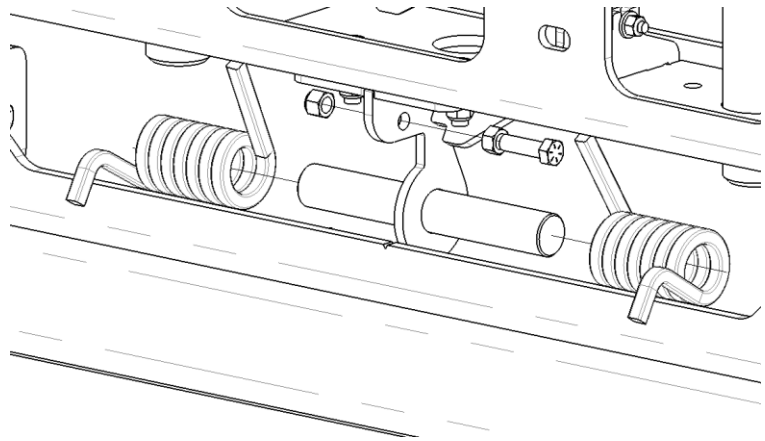


Figure 9.2 – Bracket and Lift Assist Reassembly

Installation Procedure

11. Close the truck guard and check fitment. Truck guard position can be adjusted side to side and up or down as required. Once fitment is confirmed, tighten all mounting bolts to 110 lb-ft (10 bolts total).

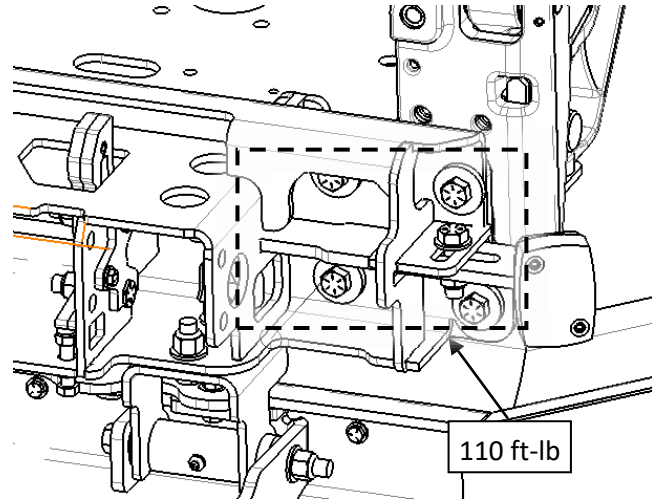


Figure 10 – Side Bracket Bolt Torque Specs (Driver Side Shown)

12. Install the air deflector (Item 9) to the truck guard (Item 1) as shown using the supplied hardware (Items 14, 15, 16).

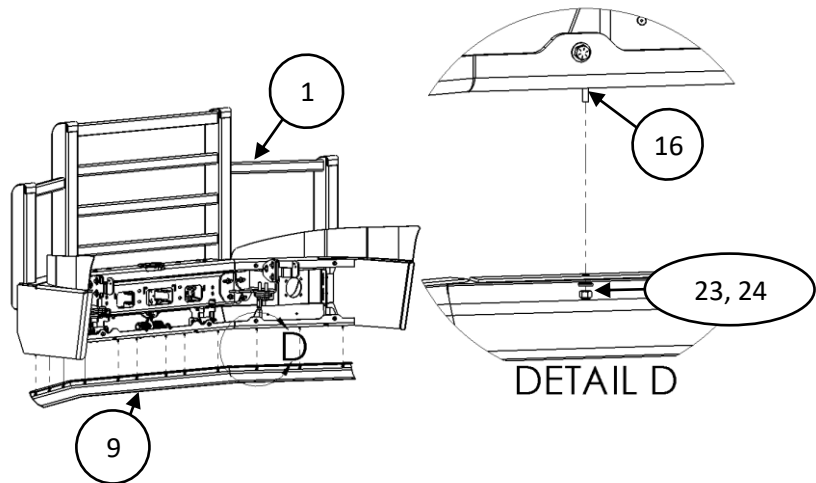


Figure 11 – Air Deflector Installation

13. Install radar sensor, if truck is equipped with one. Refer to the HERD radar sensor installation guide (S009) to re-install your sensor.

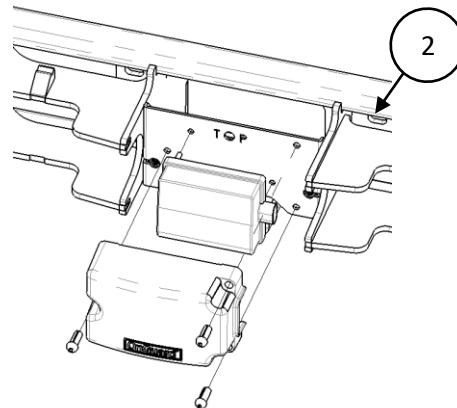


Figure 12 – CAS Unit Installation

Important

- Check mounting points after the first 5000 km and every 3-6 months.

Installation Procedure

- This truck guard is equipped with Herd Slam Latch which requires periodic adjustment. Refer to Slam Latch Installation adjustment instructions (S001) to properly adjust your Slam Latch.