

- This document shows how to install your new Grille Guard onto your truck.
- Ensure that you have completely read and understand document **S017 - Safety** before beginning this installation procedure.

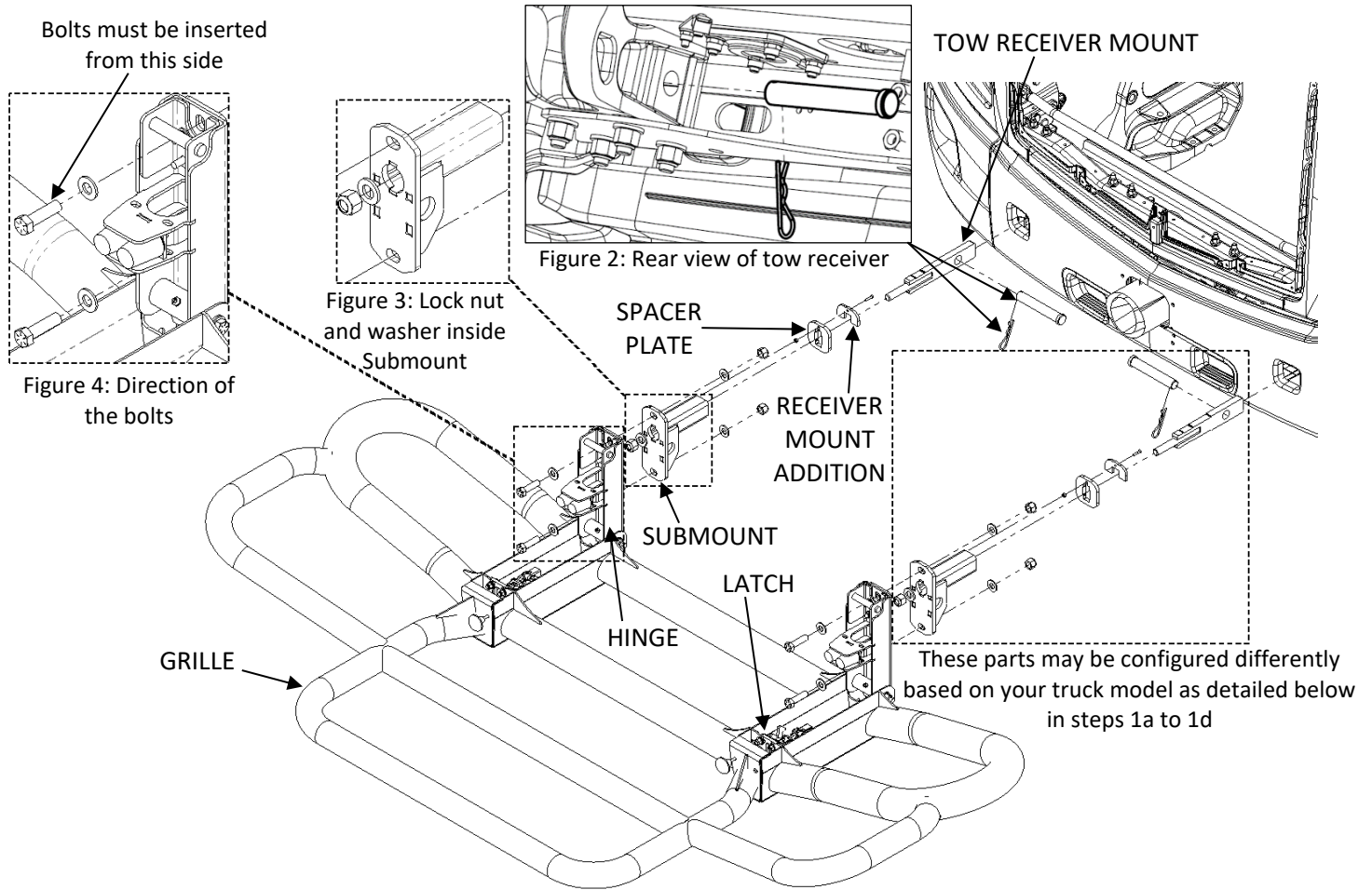


Figure 1: Grille Guard installation (Your Grille Guard may not be exactly as shown)

1. Find and follow instructions for your truck model below:

**a) Peterbilt 579/587**

- i. If OEM truck frame is equipped with a *Two-piece Cross Member (Cross Member 'A' with an overlapped bottom flange 'B' as shown in Figure A2)*, assemble as shown in Figure A1

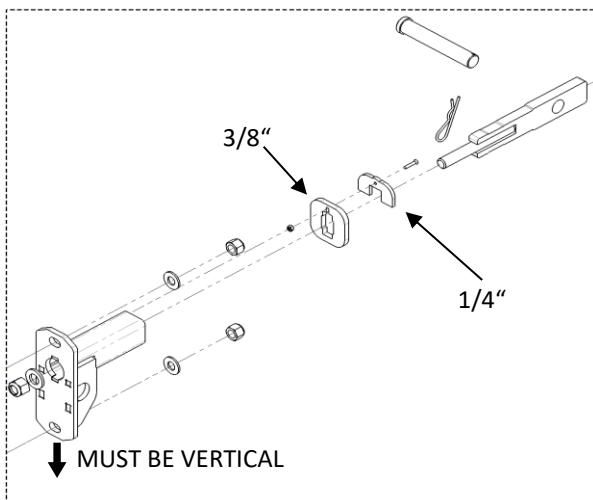


Figure A1: Components to be assembled

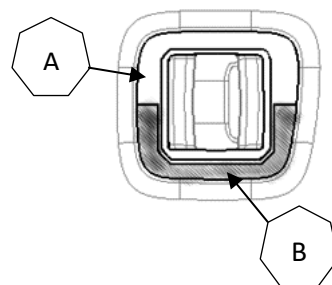


Figure A2: Two-piece Cross Member

ii. If OEM truck frame is equipped with a *Single piece Cross Member 'A'* (Figure A4), assemble as shown in Figure A3.

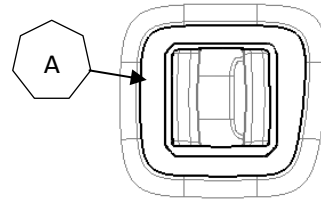
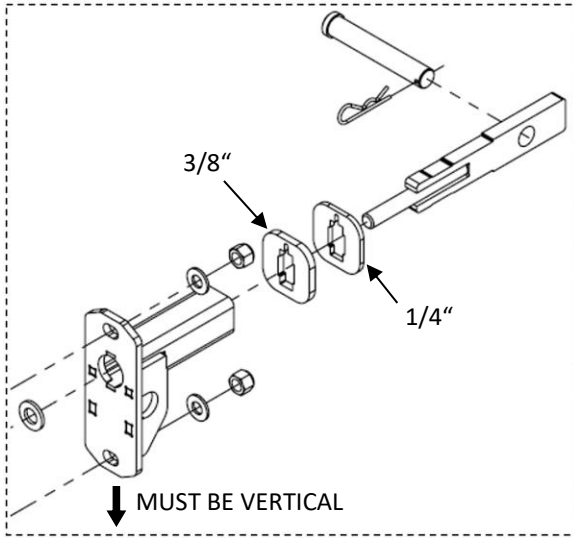


Figure A4: Single-piece Cross Member

Figure A3: Components to be assembled

**b) Peterbilt 384 & 386 and Kenworth T660 & T680 (Frame has single-piece Cross Member)**

If OEM truck frame is equipped with *single-piece Cross Member 'A'* (Figure A4), assemble as shown in Figure B1

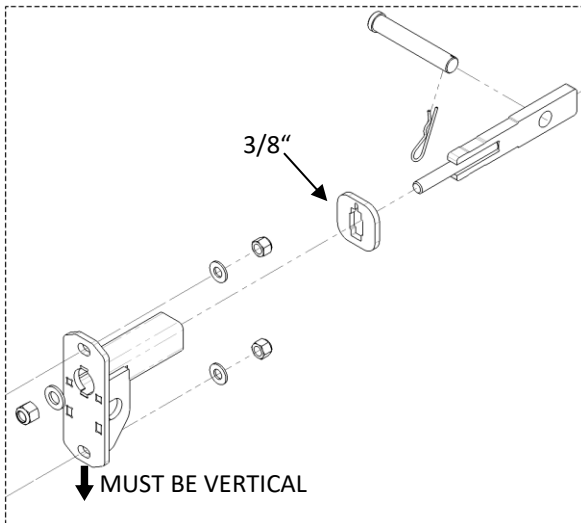


Figure B1: Components to be assembled

**c) Peterbilt 384 & 386 and Kenworth T660 & T680 (Frame has NO Cross-Member covering the tow receiver casting)**

If OEM truck has *NO Cross-Member covering the tow receiver castings*, assemble as shown in Figure C1.

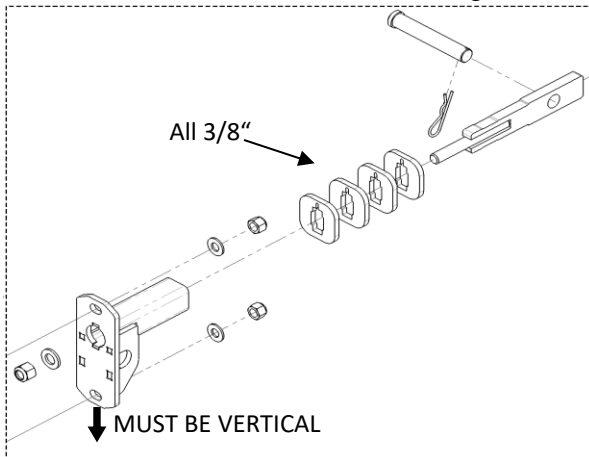


Figure C1: Components to be assembled

### d) Peterbilt 367 & 567 and Kenworth T800 & T880

If OEM truck frame has a *single Cross-Member covering the tow receiver castings* (Figure A4), assemble as shown in Figure D1.

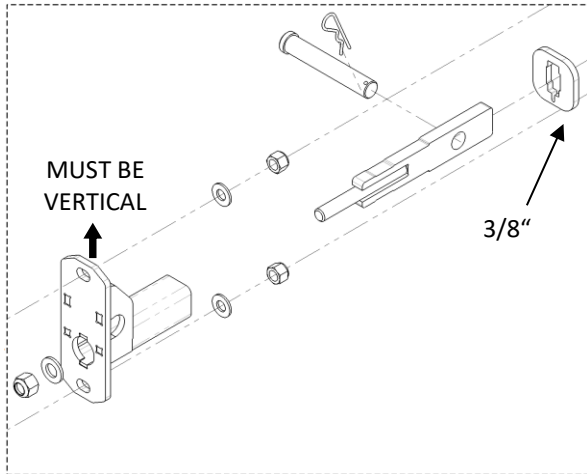


Figure D1: Components to be assembled

2. Insert Tow Receiver Mounts into tow receivers on truck. Secure using Clevis Pins and Hairpins. Spacer Plate is installed directly onto front of Cross-Member (Figure 2 on page 1)

- If access hole in factory bumper is too small for Spacer Plate to fit- slide it behind bumper before inserting Tow Receiver Mounts (Figure 5).
- **Peterbilt 367 & 357 and Kenworth T800 & T880:** With a single piece cross member Spacer Plate must be installed behind the cross member and against the tow receiver castings. **It is important that spacer plate is NOT installed directly onto the single piece cross member in order to maintain proper functionality.**

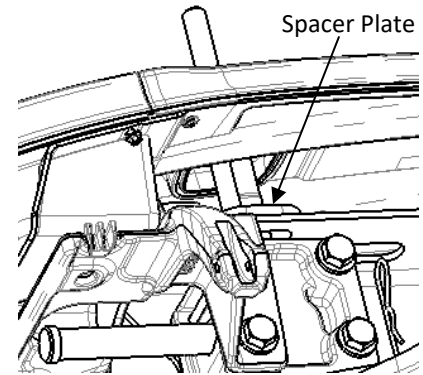


Figure 5: Tow Receiver Mount installation  
(Top view inside driver's side fender, hood not shown)

3. **Torque the lock nut into the Submounts on the threaded rod of Tow Receiver Mounts (Figure 3) to 240 ft-lb.** If a torque wrench is unavailable, turn nut  $\frac{3}{4}$  of a turn after it's seated against washers.

4. Lay Grille flat on ground in front of truck on a pallet or protective sheet. Open hinges by lifting knob.

5. Open driver side Hinge and lift to driver side Submount. Hand tighten upper hardware shown in Figure 1 (**do not fully tighten**). Repeat for passenger side. **Ensure bolts are inserted from front (Hinge side) as shown in Figure 4 on page 1.**

6. Assemble lower hardware on both sides. Hand tighten hardware (**do not fully tighten**). After all four fasteners have been assembled, **torque to 110 ft-lb**, starting with upper hardware.

7. Please proceed to document **S018 – Grille Guard Latch Adjustment Procedure** for Latch adjustment.

**Important: Check mounting point's hardware after the first 5000 km and every 3-6 months. Re-torque if necessary.**