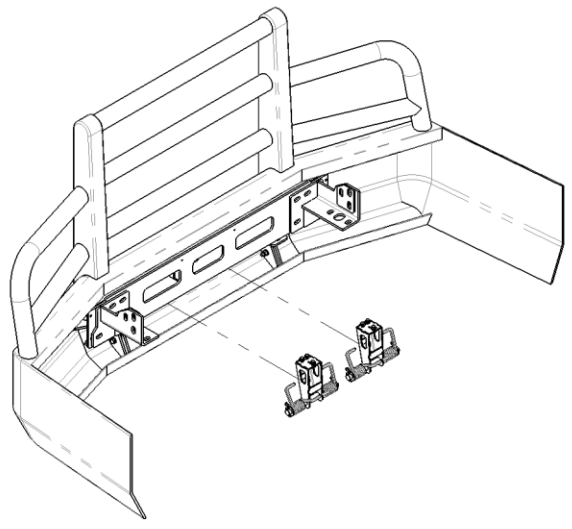


Thank you for choosing HERD!

For assistance call  
1-888-543-4373  
[www.HERD.com](http://www.HERD.com)

Product	Series
Lift Assist	Aero
	Texas
	SRT
	RT
	Big Tex



### Important

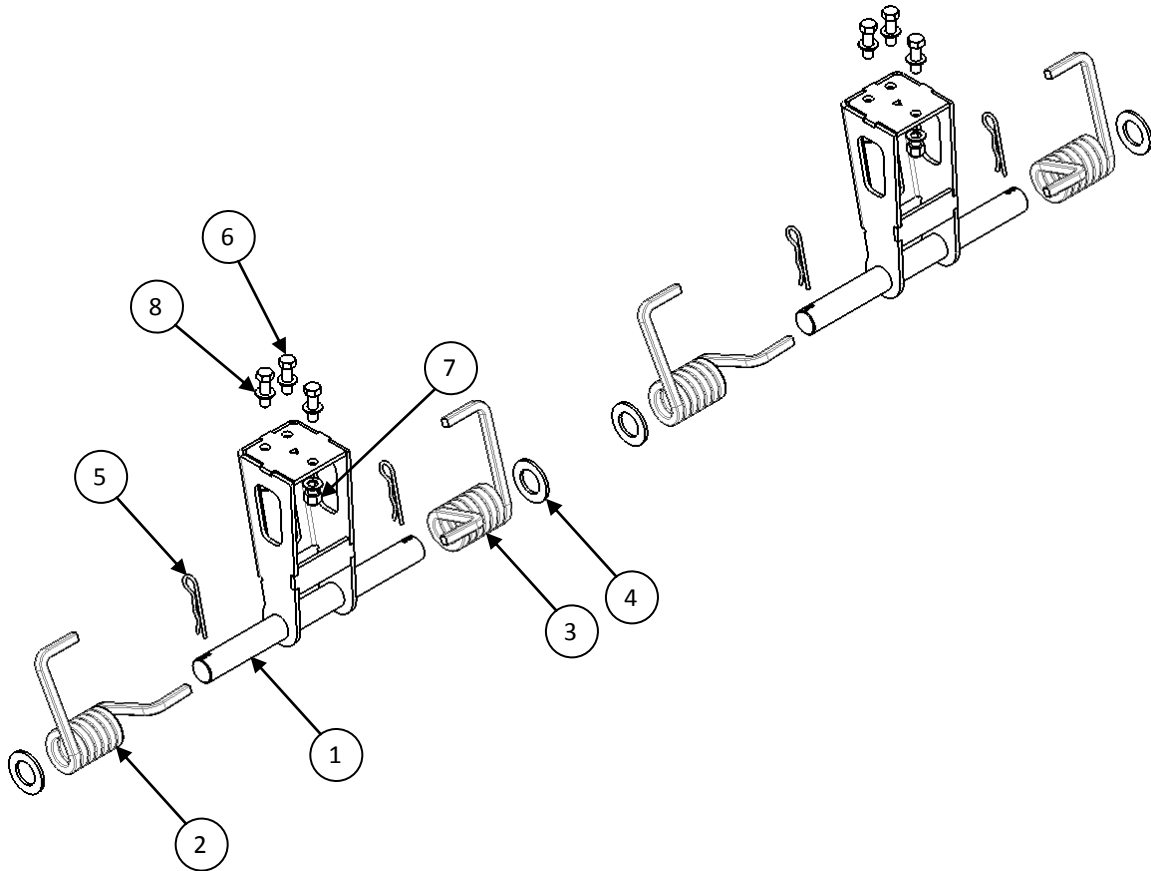
- Herd Bumpers are vehicle "Make & Model" specific. Use of a bumper on a vehicle other than the model it was designed for will constitute improper use of the product and may void warranty.
- Unless otherwise specified, Grade 8 or Class 10.9 hardware is to be used. For the purposes of these instructions, OE hardware means the truck's original factory hardware.
- For further detail of warranty coverage and warranty repair information visit [www.HERD.com](http://www.HERD.com).

### General Safety

- Take time to fully read the instructions before installing the Lift Assist mechanism.
- At all times exercise safe work shop practices, wear steel toe boots and safety glasses during installation.
- Parts and components of the Herd bumper can be heavy, handle with care to avoid injuries.
- Respect power tools and use them as advertized.

HERD North America Inc.  
2168 Springfield Road  
Box 28, Group 525, RR5  
Winnipeg, MB. Canada R2C 2Z2

## Parts and tools referenced in this instruction



### Parts and hardware included

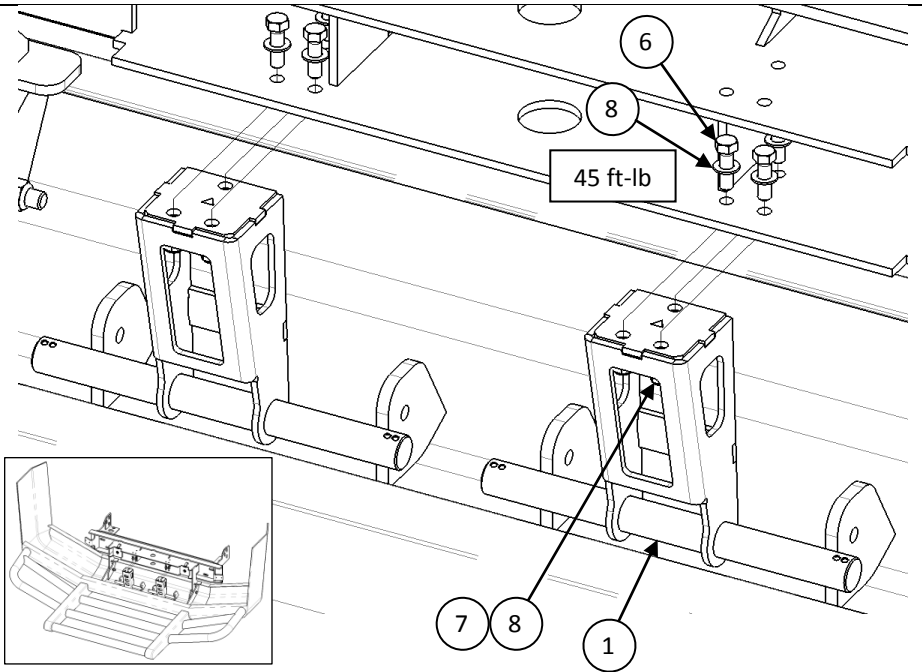
Item No	Part No	Description	Qty
1	1MPA026	Aero spring hanger subassembly	2
2	1-MC-TS-2-RH	270 right handed torsion spring	2
3	1-MC-TS-2-LH	270 left handed torsion spring	2
4	1HN018	Washer	4
5	HP 0.125X2.5	1/8" X 2-1/2" hair pin	4
6	HB 0.375-16x1.25 FT GR8	3/8"-16 X 1-1/4" hex bolt, fully threaded, grade 8	6
7	NLN 0.375-16 GR8	3/8"-16 nylon lock nut, grade 8	6
8	FW 0.375 GR8	3/8" flat washer, grade 8	12

### Tools Required

Tool	Specification
Ratchet	-
Torque wrench	-
Socket	9/16" or 14 mm
Wrench	9/16" or 14 mm

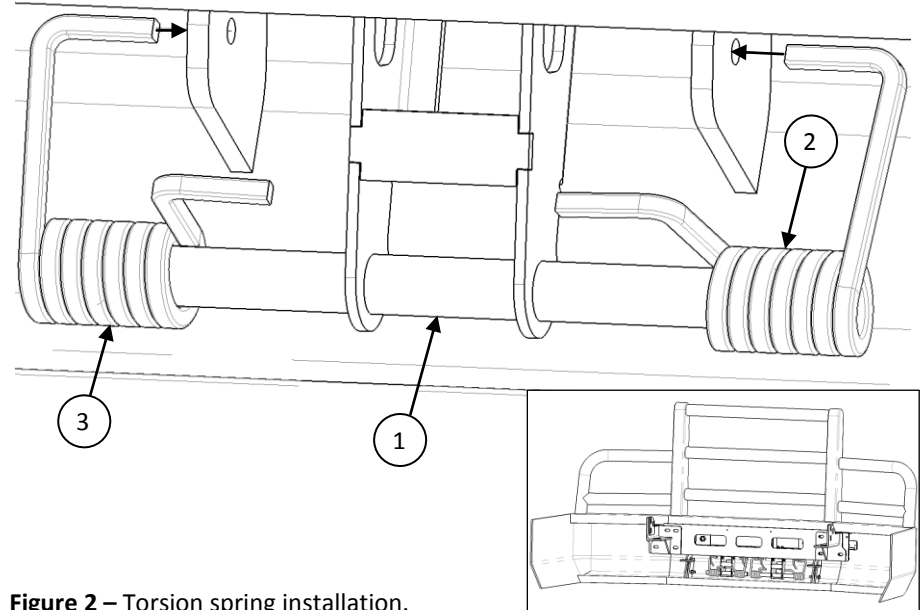
## Installation Procedure

1. Open bumper and attach spring hanger subassemblies (Item 1) to mounting bracket as shown. Fully tighten bolts to 45 ft-lb of torque.



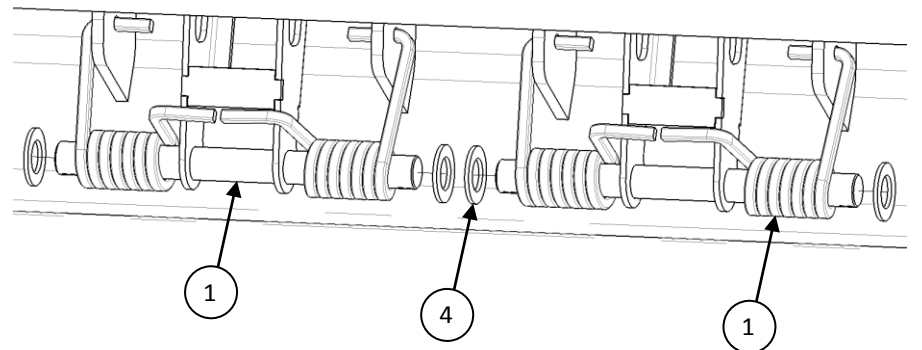
**Figure 1 – Spring hanger subassembly installation.**

2. Close the bumper. From the back, feed torsion springs (Items 2 and 3) onto spring hanger shafts as shown. Completely slide spring arms into holes until they stop. Do this for all four springs.



**Figure 2 – Torsion spring installation.**

3. Install washers (Item 4) onto spring hanger shafts to retain springs in place.



**Figure 3 – Washer installation.**

## Installation Procedure

4. Insert hair pins (Item 5) into most inward holes of spring hanger shafts to retain washers and springs. Close the bumper to ensure Lift Assist mechanism works as intended. Installation is complete.

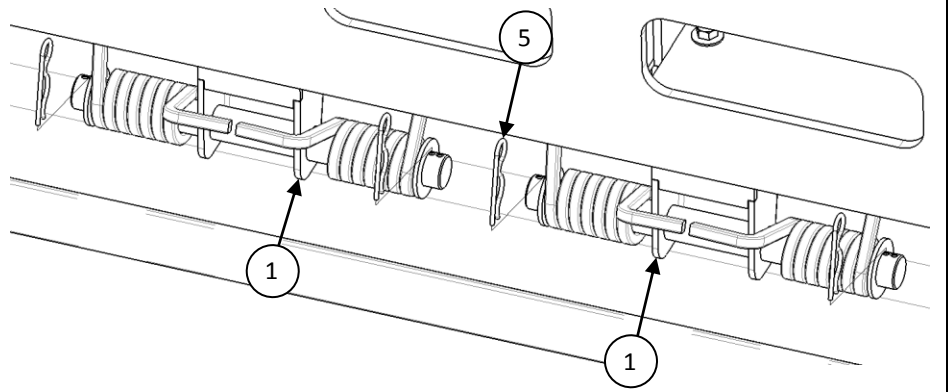


Figure 4 – Hair pin installation.